



SZABO SCANDIC

Part of Europa Biosite

Produktinformation



Forschungsprodukte & Biochemikalien



Zellkultur & Verbrauchsmaterial



Diagnostik & molekulare Diagnostik



Laborgeräte & Service

Weitere Information auf den folgenden Seiten!
See the following pages for more information!



Lieferung & Zahlungsart

siehe unsere [Liefer- und Versandbedingungen](#)

Zuschläge

- Mindermengenzuschlag
- Trockeneiszuschlag
- Gefahrgutzuschlag
- Expressversand

SZABO-SCANDIC HandelsgmbH

Quellenstraße 110, A-1100 Wien

T. +43(0)1 489 3961-0

F. +43(0)1 489 3961-7

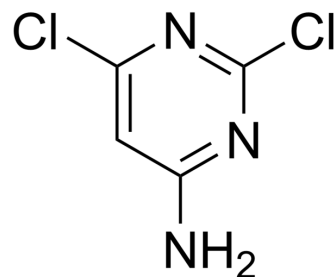
mail@szabo-scandic.com

www.szabo-scandic.com

[linkedin.com/company/szaboscandic](https://www.linkedin.com/company/szaboscandic) 

4-Amino-2,6-dichloropyrimidine

Cat. No.:	HY-W018744
CAS No.:	10132-07-7
Molecular Formula:	C ₄ H ₃ Cl ₂ N ₂
Molecular Weight:	163.99
Target:	Biochemical Assay Reagents
Pathway:	Others
Storage:	-20°C, sealed storage, away from moisture and light * In solvent : -80°C, 6 months; -20°C, 1 month (sealed storage, away from moisture and light)



SOLVENT & SOLUBILITY

In Vitro

DMSO : 100 mg/mL (609.79 mM; Need ultrasonic)

Concentration	Solvent	Mass		
		1 mg	5 mg	10 mg
Preparing Stock Solutions	1 mM	6.0979 mL	30.4897 mL	60.9793 mL
	5 mM	1.2196 mL	6.0979 mL	12.1959 mL
	10 mM	0.6098 mL	3.0490 mL	6.0979 mL

Please refer to the solubility information to select the appropriate solvent.

BIOLOGICAL ACTIVITY

Description

2,6-Dichloro pyrimidine -4-amine is a biochemical reagent that can be used as a biological material or organic compound for life science related research.

In Vitro

It is used in the Suzuki coupling of 5-chloro-2-methoxyphenyl boronic acid with 4-amino-2,6-dichloropyrimidine yielded aminochloropyrimidine.

MCE has not independently confirmed the accuracy of these methods. They are for reference only.

Caution: Product has not been fully validated for medical applications. For research use only.

Tel: 609-228-6898

Fax: 609-228-5909

E-mail: tech@MedChemExpress.com

Address: 1 Deer Park Dr, Suite Q, Monmouth Junction, NJ 08852, USA