



SZABO SCANDIC

Part of Europa Biosite

Produktinformation



Forschungsprodukte & Biochemikalien



Zellkultur & Verbrauchsmaterial



Diagnostik & molekulare Diagnostik



Laborgeräte & Service

Weitere Information auf den folgenden Seiten!
See the following pages for more information!



Lieferung & Zahlungsart

siehe unsere [Liefer- und Versandbedingungen](#)

Zuschläge

- Mindermengenzuschlag
- Trockeneiszuschlag
- Gefahrgutzuschlag
- Expressversand

SZABO-SCANDIC HandelsgmbH

Quellenstraße 110, A-1100 Wien

T. +43(0)1 489 3961-0

F. +43(0)1 489 3961-7

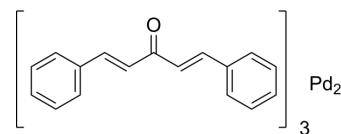
mail@szabo-scandic.com

www.szabo-scandic.com

[linkedin.com/company/szaboscandic](https://www.linkedin.com/company/szaboscandic) 

Tris(dibenzylideneacetyl)bis-palladium

Cat. No.:	HY-W018864
CAS No.:	51364-51-3
Molecular Formula:	C ₅₁ H ₄₂ O ₃ Pd ₂
Molecular Weight:	915.72
Target:	Biochemical Assay Reagents
Pathway:	Others
Storage:	4°C, protect from light, stored under nitrogen * In solvent : -80°C, 6 months; -20°C, 1 month (protect from light, stored under nitrogen)



SOLVENT & SOLUBILITY

In Vitro

DMSO : 25 mg/mL (27.30 mM; Need ultrasonic)

Concentration	Solvent	Mass		
		1 mg	5 mg	10 mg
1 mM		1.0920 mL	5.4602 mL	10.9204 mL
5 mM		0.2184 mL	1.0920 mL	2.1841 mL
10 mM		0.1092 mL	0.5460 mL	1.0920 mL

Please refer to the solubility information to select the appropriate solvent.

BIOLOGICAL ACTIVITY

Description

Tris(dibenzylideneacetyl)bis-palladium is a biochemical reagent that can be used as a biological material or organic compound for life science related research.

In Vitro

N-myristoyltransferase-1 (NMT-2) inhibitor, used as a catalyst in coupling reactions of Suzuki, Kumada, Negishi, Buchwald, etc.

MCE has not independently confirmed the accuracy of these methods. They are for reference only.

Caution: Product has not been fully validated for medical applications. For research use only.

Tel: 609-228-6898

Fax: 609-228-5909

E-mail: tech@MedChemExpress.com

Address: 1 Deer Park Dr, Suite Q, Monmouth Junction, NJ 08852, USA