



# SZABO SCANDIC

Part of Europa Biosite

## Produktinformation



Forschungsprodukte & Biochemikalien



Zellkultur & Verbrauchsmaterial



Diagnostik & molekulare Diagnostik



Laborgeräte & Service

Weitere Information auf den folgenden Seiten!  
See the following pages for more information!



### Lieferung & Zahlungsart

siehe unsere [Liefer- und Versandbedingungen](#)

### Zuschläge

- Mindermengenzuschlag
- Trockeneiszuschlag
- Gefahrgutzuschlag
- Expressversand

### SZABO-SCANDIC HandelsgmbH

Quellenstraße 110, A-1100 Wien

T. +43(0)1 489 3961-0

F. +43(0)1 489 3961-7

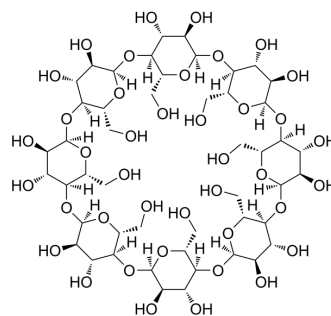
[mail@szabo-scandic.com](mailto:mail@szabo-scandic.com)

[www.szabo-scandic.com](http://www.szabo-scandic.com)

[linkedin.com/company/szaboscandic](https://www.linkedin.com/company/szaboscandic) 

## γ-Cyclodextrin

<b>Cat. No.:</b>	HY-W040040		
<b>CAS No.:</b>	17465-86-0		
<b>Molecular Formula:</b>	C <sub>48</sub> H <sub>80</sub> O <sub>40</sub>		
<b>Molecular Weight:</b>	1297.12		
<b>Target:</b>	Endogenous Metabolite		
<b>Pathway:</b>	Metabolic Enzyme/Protease		
<b>Storage:</b>	Powder	-20°C	3 years
		4°C	2 years
	In solvent	-80°C	6 months
		-20°C	1 month



### SOLVENT & SOLUBILITY

<b>In Vitro</b>	DMSO : 100 mg/mL (77.09 mM; Need ultrasonic)					
		Solvent Concentration	Mass	1 mg	5 mg	10 mg
	<b>Preparing Stock Solutions</b>	1 mM	0.7709 mL	3.8547 mL	7.7094 mL	
		5 mM	0.1542 mL	0.7709 mL	1.5419 mL	
10 mM		0.0771 mL	0.3855 mL	0.7709 mL		
Please refer to the solubility information to select the appropriate solvent.						
<b>In Vivo</b>	<ol style="list-style-type: none"> <li>Add each solvent one by one: 10% DMSO &gt;&gt; 40% PEG300 &gt;&gt; 5% Tween-80 &gt;&gt; 45% saline Solubility: ≥ 2.5 mg/mL (1.93 mM); Clear solution</li> <li>Add each solvent one by one: 10% DMSO &gt;&gt; 90% (20% SBE-β-CD in saline) Solubility: ≥ 2.5 mg/mL (1.93 mM); Clear solution</li> <li>Add each solvent one by one: 10% DMSO &gt;&gt; 90% corn oil Solubility: ≥ 2.5 mg/mL (1.93 mM); Clear solution</li> </ol>					

### BIOLOGICAL ACTIVITY

<b>Description</b>	γ-Cyclodextrin is an endogenous metabolite.
<b>IC<sub>50</sub> &amp; Target</b>	Human Endogenous Metabolite

---

**Caution: Product has not been fully validated for medical applications. For research use only.**

Tel: 609-228-6898

Fax: 609-228-5909

E-mail: [tech@MedChemExpress.com](mailto:tech@MedChemExpress.com)

Address: 1 Deer Park Dr, Suite Q, Monmouth Junction, NJ 08852, USA