



# SZABO SCANDIC

Part of Europa Biosite

## Produktinformation



Forschungsprodukte & Biochemikalien



Zellkultur & Verbrauchsmaterial



Diagnostik & molekulare Diagnostik



Laborgeräte & Service

Weitere Information auf den folgenden Seiten!  
See the following pages for more information!



### Lieferung & Zahlungsart

siehe unsere [Liefer- und Versandbedingungen](#)

### Zuschläge

- Mindermengenzuschlag
- Trockeneiszuschlag
- Gefahrgutzuschlag
- Expressversand

### SZABO-SCANDIC HandelsgmbH

Quellenstraße 110, A-1100 Wien

T. +43(0)1 489 3961-0

F. +43(0)1 489 3961-7

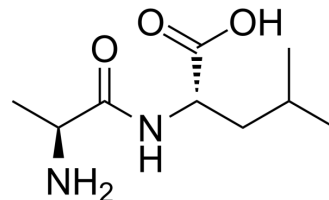
[mail@szabo-scandic.com](mailto:mail@szabo-scandic.com)

[www.szabo-scandic.com](http://www.szabo-scandic.com)

[linkedin.com/company/szaboscandic](https://www.linkedin.com/company/szaboscandic) 

## L-Alanyl-L-leucine

Cat. No.:	HY-W040088		
CAS No.:	3303-34-2		
Molecular Formula:	C <sub>9</sub> H <sub>18</sub> N <sub>2</sub> O <sub>3</sub>		
Molecular Weight:	202.25		
Target:	Endogenous Metabolite		
Pathway:	Metabolic Enzyme/Protease		
Storage:	Powder	-20°C	3 years
	In solvent	-80°C	6 months
		-20°C	1 month



### SOLVENT & SOLUBILITY

#### In Vitro

H<sub>2</sub>O : ≥ 100 mg/mL (494.44 mM)  
 DMSO : 1 mg/mL (4.94 mM; ultrasonic and warming and heat to 60°C)  
 \* "≥" means soluble, but saturation unknown.

	Solvent		1 mg	5 mg	10 mg
	Concentration	Mass			
Preparing Stock Solutions	1 mM		4.9444 mL	24.7219 mL	49.4438 mL
	5 mM		0.9889 mL	4.9444 mL	9.8888 mL
	10 mM		0.4944 mL	2.4722 mL	4.9444 mL

Please refer to the solubility information to select the appropriate solvent.

### BIOLOGICAL ACTIVITY

Description	L-Alanyl-L-leucine is an endogenous metabolite.
IC <sub>50</sub> & Target	Human Endogenous Metabolite

**Caution: Product has not been fully validated for medical applications. For research use only.**

Tel: 609-228-6898

Fax: 609-228-5909

E-mail: tech@MedChemExpress.com

Address: 1 Deer Park Dr, Suite Q, Monmouth Junction, NJ 08852, USA