



# SZABO SCANDIC

Part of Europa Biosite

## Produktinformation



Forschungsprodukte & Biochemikalien



Zellkultur & Verbrauchsmaterial



Diagnostik & molekulare Diagnostik



Laborgeräte & Service

Weitere Information auf den folgenden Seiten!  
See the following pages for more information!



### Lieferung & Zahlungsart

siehe unsere [Liefer- und Versandbedingungen](#)

### Zuschläge

- Mindermengenzuschlag
- Trockeneiszuschlag
- Gefahrgutzuschlag
- Expressversand

### SZABO-SCANDIC HandelsgmbH

Quellenstraße 110, A-1100 Wien

T. +43(0)1 489 3961-0

F. +43(0)1 489 3961-7

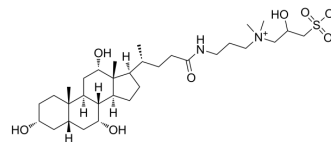
[mail@szabo-scandic.com](mailto:mail@szabo-scandic.com)

[www.szabo-scandic.com](http://www.szabo-scandic.com)

[linkedin.com/company/szaboscandic](https://www.linkedin.com/company/szaboscandic) 

## CHAPSO

Cat. No.:	HY-W040201
CAS No.:	82473-24-3
Molecular Formula:	C <sub>32</sub> H <sub>58</sub> N <sub>2</sub> O <sub>8</sub> S
Molecular Weight:	630.88
Target:	Biochemical Assay Reagents
Pathway:	Others
Storage:	Please store the product under the recommended conditions in the Certificate of Analysis.



## BIOLOGICAL ACTIVITY

### Description

CHAPSO is a zwitterionic detergent that is thermally stable. CHAPSO is able to broaden the particle orientation distribution, enabling single-particle cryo-electron microscopy (cryo-EM) to produce isotropically uniform maps. CHAPSO can eliminate the directional bias of bacterial transcription complexes and help determine the structure of bacterial transcription complexes under cryo-electron microscopy<sup>[1][2]</sup>.

## REFERENCES

- [1]. Li M, et al. Morphological characterization of DMPC/CHAPSO bicellar mixtures: a combined SANS and NMR study. *Langmuir*. 2013 Dec 23;29(51):15943-57.
- [2]. Chen J, et al. Eliminating effects of particle adsorption to the air/water interface in single-particle cryo-electron microscopy: Bacterial RNA polymerase and CHAPSO. *J Struct Biol X*. 2019 Jan-Mar;1:100005.

**Caution: Product has not been fully validated for medical applications. For research use only.**

Tel: 609-228-6898

Fax: 609-228-5909

E-mail: tech@MedChemExpress.com

Address: 1 Deer Park Dr, Suite Q, Monmouth Junction, NJ 08852, USA