



# SZABO SCANDIC

Part of Europa Biosite

## Produktinformation



Forschungsprodukte & Biochemikalien



Zellkultur & Verbrauchsmaterial



Diagnostik & molekulare Diagnostik



Laborgeräte & Service

Weitere Information auf den folgenden Seiten!  
See the following pages for more information!



### Lieferung & Zahlungsart

siehe unsere [Liefer- und Versandbedingungen](#)

### Zuschläge

- Mindermengenzuschlag
- Trockeneiszuschlag
- Gefahrgutzuschlag
- Expressversand

### SZABO-SCANDIC HandelsgmbH

Quellenstraße 110, A-1100 Wien

T. +43(0)1 489 3961-0

F. +43(0)1 489 3961-7

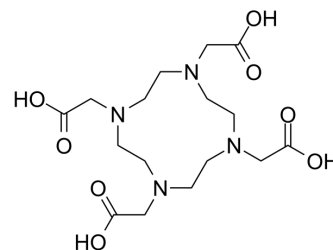
[mail@szabo-scandic.com](mailto:mail@szabo-scandic.com)

[www.szabo-scandic.com](http://www.szabo-scandic.com)

[linkedin.com/company/szaboscandic](https://www.linkedin.com/company/szaboscandic) 

## Tetraxetan

**Cat. No.:** HY-W053583  
**CAS No.:** 60239-18-1  
**Molecular Formula:** C<sub>16</sub>H<sub>28</sub>N<sub>4</sub>O<sub>8</sub>  
**Molecular Weight:** 404.42  
**Target:** Biochemical Assay Reagents  
**Pathway:** Others  
**Storage:** 4°C, protect from light  
 \* In solvent : -80°C, 6 months; -20°C, 1 month (protect from light)



### SOLVENT & SOLUBILITY

#### In Vitro

H<sub>2</sub>O : 100 mg/mL (247.27 mM; Need ultrasonic)

Preparing Stock Solutions	Solvent Concentration	Mass		
		1 mg	5 mg	10 mg
	1 mM	2.4727 mL	12.3634 mL	24.7268 mL
	5 mM	0.4945 mL	2.4727 mL	4.9454 mL
	10 mM	0.2473 mL	1.2363 mL	2.4727 mL

Please refer to the solubility information to select the appropriate solvent.

### BIOLOGICAL ACTIVITY

#### Description

Tetraxetan (DOTA) is a complexing agent, and its complexes have medical applications as contrast agents and in cancer research<sup>[1]</sup>.

### REFERENCES

[1]. Orcutt KD, et al. Biodistribution and clearance of small molecule hapten chelates for pretargeted radioimmunotherapy. *Mol Imaging Biol.* 2011 Apr;13(2):215-21.

**Caution: Product has not been fully validated for medical applications. For research use only.**

Tel: 609-228-6898

Fax: 609-228-5909

E-mail: tech@MedChemExpress.com

Address: 1 Deer Park Dr, Suite Q, Monmouth Junction, NJ 08852, USA