



# SZABO SCANDIC

Part of Europa Biosite

## Produktinformation



Forschungsprodukte & Biochemikalien



Zellkultur & Verbrauchsmaterial



Diagnostik & molekulare Diagnostik



Laborgeräte & Service

Weitere Information auf den folgenden Seiten!  
See the following pages for more information!



### Lieferung & Zahlungsart

siehe unsere [Liefer- und Versandbedingungen](#)

### Zuschläge

- Mindermengenzuschlag
- Trockeneiszuschlag
- Gefahrgutzuschlag
- Expressversand

### SZABO-SCANDIC HandelsgmbH

Quellenstraße 110, A-1100 Wien

T. +43(0)1 489 3961-0

F. +43(0)1 489 3961-7

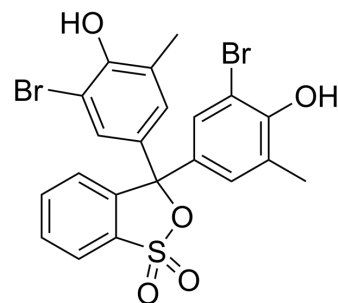
[mail@szabo-scandic.com](mailto:mail@szabo-scandic.com)

[www.szabo-scandic.com](http://www.szabo-scandic.com)

[linkedin.com/company/szaboscandic](https://www.linkedin.com/company/szaboscandic) 

## Bromocresol purple

<b>Cat. No.:</b>	HY-W087928
<b>CAS No.:</b>	115-40-2
<b>Molecular Formula:</b>	C <sub>21</sub> H <sub>16</sub> Br <sub>2</sub> O <sub>5</sub> S
<b>Molecular Weight:</b>	540.22
<b>Target:</b>	Biochemical Assay Reagents
<b>Pathway:</b>	Others
<b>Storage:</b>	Please store the product under the recommended conditions in the Certificate of Analysis.



### BIOLOGICAL ACTIVITY

#### Description

Bromocresol purple is a pH indicator, whose color changes from yellow to purple when the pH increases from 5.2 to 6.8. Bromocresol purple can be used for detecting yeast cells with plasma membrane damage<sup>[1][2]</sup>.

### REFERENCES

[1]. Lei K J, et al. Screening and analysis of rhizosphere acidification deficiency mutants in *Arabidopsis thaliana* under low phosphorus[J]. *Soil ence and Plant Nutrition*, 2015, 61(3):1-8.

[2]. Kurzweilová H, et al. Fluorescent staining with bromocresol purple: a rapid method for determining yeast cell dead count developed as an assay of killer toxin activity. *Yeast*. 1993 Nov;9(11):1207-11.

**Caution: Product has not been fully validated for medical applications. For research use only.**

Tel: 609-228-6898

Fax: 609-228-5909

E-mail: tech@MedChemExpress.com

Address: 1 Deer Park Dr, Suite Q, Monmouth Junction, NJ 08852, USA