



SZABO SCANDIC

Part of Europa Biosite

Produktinformation



Forschungsprodukte & Biochemikalien



Zellkultur & Verbrauchsmaterial



Diagnostik & molekulare Diagnostik



Laborgeräte & Service

Weitere Information auf den folgenden Seiten!
See the following pages for more information!



Lieferung & Zahlungsart

siehe unsere [Liefer- und Versandbedingungen](#)

Zuschläge

- Mindermengenzuschlag
- Trockeneiszuschlag
- Gefahrgutzuschlag
- Expressversand

SZABO-SCANDIC HandelsgmbH

Quellenstraße 110, A-1100 Wien

T. +43(0)1 489 3961-0

F. +43(0)1 489 3961-7

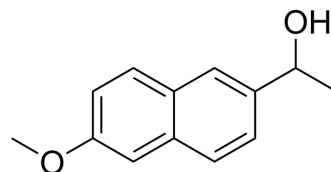
mail@szabo-scandic.com

www.szabo-scandic.com

[linkedin.com/company/szaboscandic](https://www.linkedin.com/company/szaboscandic) 

1-(6-Methoxy-2-naphthyl)ethanol

Cat. No.:	HY-W101437
CAS No.:	77301-42-9
Molecular Formula:	C ₁₃ H ₁₄ O ₂
Molecular Weight:	202.25
Target:	Biochemical Assay Reagents
Pathway:	Others
Storage:	Powder -20°C 3 years 4°C 2 years In solvent -80°C 6 months -20°C 1 month



BIOLOGICAL ACTIVITY

Description	1-(6-Methoxynaphthalen-2-yl)ethanol is a biochemical reagent that can be used as a biological material or organic compound for life science related research.
In Vitro	1-(6-Methoxy-2-naphthyl)ethanol is a potential impurity in Naproxen. Naproxen is a non-selective COX inhibitor. MCE has not independently confirmed the accuracy of these methods. They are for reference only.

Caution: Product has not been fully validated for medical applications. For research use only.

Tel: 609-228-6898

Fax: 609-228-5909

E-mail: tech@MedChemExpress.com

Address: 1 Deer Park Dr, Suite Q, Monmouth Junction, NJ 08852, USA