



SZABO SCANDIC

Part of Europa Biosite

Produktinformation



Forschungsprodukte & Biochemikalien



Zellkultur & Verbrauchsmaterial



Diagnostik & molekulare Diagnostik



Laborgeräte & Service

Weitere Information auf den folgenden Seiten!
See the following pages for more information!



Lieferung & Zahlungsart

siehe unsere [Liefer- und Versandbedingungen](#)

Zuschläge

- Mindermengenzuschlag
- Trockeneiszuschlag
- Gefahrgutzuschlag
- Expressversand

SZABO-SCANDIC HandelsgmbH

Quellenstraße 110, A-1100 Wien

T. +43(0)1 489 3961-0

F. +43(0)1 489 3961-7

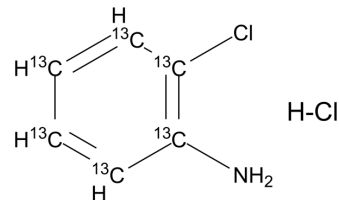
mail@szabo-scandic.com

www.szabo-scandic.com

[linkedin.com/company/szaboscandic](https://www.linkedin.com/company/szaboscandic) 

2-Chloroaniline hydrochloride-¹³C₆

Cat. No.:	HY-W104010S
CAS No.:	1261170-86-8
Molecular Formula:	¹³ C ₆ H ₇ Cl ₂ N
Molecular Weight:	169.99
Target:	Isotope-Labeled Compounds
Pathway:	Others
Storage:	4°C, sealed storage, away from moisture * In solvent : -80°C, 6 months; -20°C, 1 month (sealed storage, away from moisture)



SOLVENT & SOLUBILITY

In Vitro

DMSO : 250 mg/mL (1470.67 mM; Need ultrasonic)

Concentration	Solvent	Mass	1 mg	5 mg	10 mg
			1 mg	5 mg	10 mg
Preparing Stock Solutions	1 mM		5.8827 mL	29.4135 mL	58.8270 mL
	5 mM		1.1765 mL	5.8827 mL	11.7654 mL
	10 mM		0.5883 mL	2.9413 mL	5.8827 mL

Please refer to the solubility information to select the appropriate solvent.

BIOLOGICAL ACTIVITY

Description

2-Chloroaniline hydrochloride-¹³C₆ is the ¹³C labeled 2-Chloroaniline hydrochloride[1].

In Vitro

Stable heavy isotopes of hydrogen, carbon, and other elements have been incorporated into drug molecules, largely as tracers for quantitation during the drug development process. Deuteration has gained attention because of its potential to affect the pharmacokinetic and metabolic profiles of drugs^[1].

MCE has not independently confirmed the accuracy of these methods. They are for reference only.

REFERENCES

[1]. Russak EM, et al. Impact of Deuterium Substitution on the Pharmacokinetics of Pharmaceuticals. Ann Pharmacother. 2019 Feb;53(2):211-216.

Caution: Product has not been fully validated for medical applications. For research use only.

Tel: 609-228-6898

Fax: 609-228-5909

E-mail: tech@MedChemExpress.com

Address: 1 Deer Park Dr, Suite Q, Monmouth Junction, NJ 08852, USA