



# SZABO SCANDIC

Part of Europa Biosite

## Produktinformation



Forschungsprodukte & Biochemikalien



Zellkultur & Verbrauchsmaterial



Diagnostik & molekulare Diagnostik



Laborgeräte & Service

Weitere Information auf den folgenden Seiten!  
See the following pages for more information!



### Lieferung & Zahlungsart

siehe unsere [Liefer- und Versandbedingungen](#)

### Zuschläge

- Mindermengenzuschlag
- Trockeneiszuschlag
- Gefahrgutzuschlag
- Expressversand

### SZABO-SCANDIC HandelsgmbH

Quellenstraße 110, A-1100 Wien

T. +43(0)1 489 3961-0

F. +43(0)1 489 3961-7

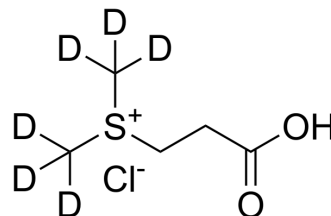
[mail@szabo-scandic.com](mailto:mail@szabo-scandic.com)

[www.szabo-scandic.com](http://www.szabo-scandic.com)

[linkedin.com/company/szaboscandic](https://www.linkedin.com/company/szaboscandic) 

## (2-Carboxyethyl)dimethylsulfonium-d<sub>6</sub> chloride

<b>Cat. No.:</b>	HY-W105506S
<b>CAS No.:</b>	1246274-70-3
<b>Molecular Formula:</b>	C <sub>5</sub> H <sub>3</sub> D <sub>6</sub> ClO <sub>2</sub> S
<b>Molecular Weight:</b>	176.69
<b>Target:</b>	Isotope-Labeled Compounds
<b>Pathway:</b>	Others
<b>Storage:</b>	4°C, sealed storage, away from moisture * In solvent : -80°C, 6 months; -20°C, 1 month (sealed storage, away from moisture)



### SOLVENT & SOLUBILITY

<b>In Vitro</b>	DMSO : 50 mg/mL (282.98 mM; Need ultrasonic)				
		Solvent Concentration	Mass		
	<b>Preparing Stock Solutions</b>		1 mg	5 mg	10 mg
		1 mM	5.6596 mL	28.2981 mL	56.5963 mL
		5 mM	1.1319 mL	5.6596 mL	11.3193 mL
	10 mM	0.5660 mL	2.8298 mL	5.6596 mL	
Please refer to the solubility information to select the appropriate solvent.					
<b>In Vivo</b>	1. Add each solvent one by one: 10% DMSO >> 40% PEG300 >> 5% Tween-80 >> 45% saline Solubility: ≥ 2.5 mg/mL (14.15 mM); Clear solution				
	2. Add each solvent one by one: 10% DMSO >> 90% (20% SBE-β-CD in saline) Solubility: ≥ 2.5 mg/mL (14.15 mM); Clear solution				
	3. Add each solvent one by one: 10% DMSO >> 90% corn oil Solubility: ≥ 2.5 mg/mL (14.15 mM); Clear solution				

### BIOLOGICAL ACTIVITY

<b>Description</b>	(2-Carboxyethyl)dimethylsulfonium-d <sub>6</sub> chloride is the deuterium labeled (2-Carboxyethyl)dimethylsulfonium chloride[1].
<b>In Vitro</b>	Stable heavy isotopes of hydrogen, carbon, and other elements have been incorporated into drug molecules, largely as tracers for quantitation during the drug development process. Deuteration has gained attention because of its potential to affect the pharmacokinetic and metabolic profiles of drugs <sup>[1]</sup> . MCE has not independently confirmed the accuracy of these methods. They are for reference only.

### REFERENCES

**Caution: Product has not been fully validated for medical applications. For research use only.**

Tel: 609-228-6898

Fax: 609-228-5909

E-mail: [tech@MedChemExpress.com](mailto:tech@MedChemExpress.com)

Address: 1 Deer Park Dr, Suite Q, Monmouth Junction, NJ 08852, USA