



SZABO SCANDIC

Part of Europa Biosite

Produktinformation



Forschungsprodukte & Biochemikalien



Zellkultur & Verbrauchsmaterial



Diagnostik & molekulare Diagnostik



Laborgeräte & Service

Weitere Information auf den folgenden Seiten!
See the following pages for more information!



Lieferung & Zahlungsart

siehe unsere [Liefer- und Versandbedingungen](#)

Zuschläge

- Mindermengenzuschlag
- Trockeneiszuschlag
- Gefahrgutzuschlag
- Expressversand

SZABO-SCANDIC HandelsgmbH

Quellenstraße 110, A-1100 Wien

T. +43(0)1 489 3961-0

F. +43(0)1 489 3961-7

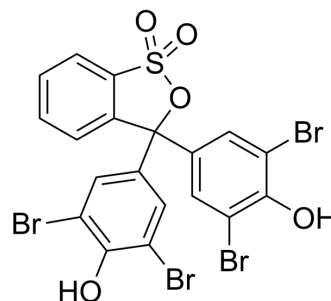
mail@szabo-scandic.com

www.szabo-scandic.com

[linkedin.com/company/szaboscandic](https://www.linkedin.com/company/szaboscandic) 

Bromophenol blue indicator (3.0-4.6)

Cat. No.:	HY-W110798
CAS No.:	115-39-9
Molecular Formula:	C ₁₉ H ₁₀ Br ₄ O ₃ S
Molecular Weight:	669.96
Target:	Biochemical Assay Reagents
Pathway:	Others
Storage:	4°C, stored under nitrogen * In solvent : -80°C, 6 months; -20°C, 1 month (stored under nitrogen)



SOLVENT & SOLUBILITY

In Vitro	DMSO : 100 mg/mL (149.26 mM; Need ultrasonic)				
		Solvent Concentration	Mass 1 mg	5 mg	10 mg
	Preparing Stock Solutions	1 mM	1.4926 mL	7.4631 mL	14.9263 mL
		5 mM	0.2985 mL	1.4926 mL	2.9853 mL
		10 mM	0.1493 mL	0.7463 mL	1.4926 mL
Please refer to the solubility information to select the appropriate solvent.					
In Vivo	1. Add each solvent one by one: 10% DMSO >> 40% PEG300 >> 5% Tween-80 >> 45% saline Solubility: ≥ 2.5 mg/mL (3.73 mM); Clear solution				

BIOLOGICAL ACTIVITY

Description	Bromophenol blue indicator (3.0-4.6) is a synthetic dye commonly used as an acid-base indicator with a transition range of pH 3.0-4.6. Bromophenol blue indicator (3.0-4.6) is water soluble and changes color from yellow to blue as the pH of the solution changes from acidic to basic. Its unique chemical properties make it an important ingredient in a variety of scientific applications, especially in biochemistry and molecular biology. In addition, it can be used as a stain in microbiology and histology. However, Bromophenol blue indicator (3.0-4.6) has potential irritating and staining properties.
In Vitro	Bromophenol blue indicator (3.0-4.6) is a biochemical reagent that can be used as a biological material or organic compound for life science related research. MCE has not independently confirmed the accuracy of these methods. They are for reference only.

Caution: Product has not been fully validated for medical applications. For research use only.

Tel: 609-228-6898

Fax: 609-228-5909

E-mail: tech@MedChemExpress.com

Address: 1 Deer Park Dr, Suite Q, Monmouth Junction, NJ 08852, USA