



# SZABO SCANDIC

Part of Europa Biosite

## Produktinformation



Forschungsprodukte & Biochemikalien



Zellkultur & Verbrauchsmaterial



Diagnostik & molekulare Diagnostik



Laborgeräte & Service

Weitere Information auf den folgenden Seiten!  
See the following pages for more information!



### Lieferung & Zahlungsart

siehe unsere [Liefer- und Versandbedingungen](#)

### Zuschläge

- Mindermengenzuschlag
- Trockeneiszuschlag
- Gefahrgutzuschlag
- Expressversand

### SZABO-SCANDIC HandelsgmbH

Quellenstraße 110, A-1100 Wien

T. +43(0)1 489 3961-0

F. +43(0)1 489 3961-7

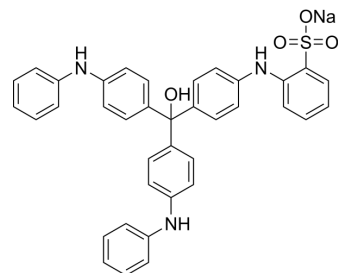
[mail@szabo-scandic.com](mailto:mail@szabo-scandic.com)

[www.szabo-scandic.com](http://www.szabo-scandic.com)

[linkedin.com/company/szaboscandic](https://www.linkedin.com/company/szaboscandic) 

## Alkali blue 6B monosodium(IND)

Cat. No.:	HY-W110925
CAS No.:	1324-80-7
Molecular Formula:	C <sub>37</sub> H <sub>30</sub> N <sub>3</sub> NaO <sub>4</sub> S
Molecular Weight:	635.71
Target:	Biochemical Assay Reagents
Pathway:	Others
Storage:	Please store the product under the recommended conditions in the Certificate of Analysis.



### BIOLOGICAL ACTIVITY

#### Description

Alkali blue 6B monosodium (IND) is a basic dye that can be used as a reagent in biochemical and medical research. Alkali blue 6B monosodium (IND) interacts with various proteins, and can be used in protein adsorption studies. Alkali blue 6B monosodium (IND) contains SO<sub>3</sub>H<sup>-</sup>, NH and OH groups that may react with divalent heavy metal ions, and can be used for the removal of heavy metals from aqua<sup>[1][2]</sup>.

### REFERENCES

- [1]. Gao H W, et al., langmuir aggregation of alkali blue 6b in proteins: Study and application[J]. Macromolecular Bioscience, 2002, 2(6): 280-285.
- [2]. Denizli A, et al., Novel dye-attached macroporous films for cadmium, zinc and lead sorption: Alkali Blue 6B-attached macroporous poly(2-hydroxyethyl methacrylate). Talanta. 1998 Aug;46(4):551-8.

**Caution: Product has not been fully validated for medical applications. For research use only.**

Tel: 609-228-6898

Fax: 609-228-5909

E-mail: tech@MedChemExpress.com

Address: 1 Deer Park Dr, Suite Q, Monmouth Junction, NJ 08852, USA