



SZABO SCANDIC

Part of Europa Biosite

Produktinformation



Forschungsprodukte & Biochemikalien



Zellkultur & Verbrauchsmaterial



Diagnostik & molekulare Diagnostik



Laborgeräte & Service

Weitere Information auf den folgenden Seiten!
See the following pages for more information!



Lieferung & Zahlungsart

siehe unsere [Liefer- und Versandbedingungen](#)

Zuschläge

- Mindermengenzuschlag
- Trockeneiszuschlag
- Gefahrgutzuschlag
- Expressversand

SZABO-SCANDIC HandelsgmbH

Quellenstraße 110, A-1100 Wien

T. +43(0)1 489 3961-0

F. +43(0)1 489 3961-7

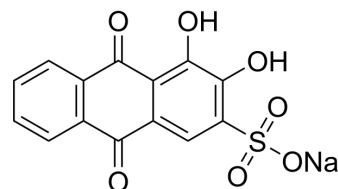
mail@szabo-scandic.com

www.szabo-scandic.com

[linkedin.com/company/szaboscandic](https://www.linkedin.com/company/szaboscandic) 

Alizarin red S indicator (C.I. 58005)

Cat. No.:	HY-W110927
CAS No.:	130-22-3
Molecular Formula:	C ₁₄ H ₇ NaO ₇ S
Molecular Weight:	342.26
Target:	Biochemical Assay Reagents
Pathway:	Others
Storage:	4°C, sealed storage, away from moisture * In solvent : -80°C, 6 months; -20°C, 1 month (sealed storage, away from moisture)



SOLVENT & SOLUBILITY

In Vitro	DMSO : 12.5 mg/mL (36.52 mM; ultrasonic and warming and heat to 60°C)					
	H ₂ O : 2 mg/mL (5.84 mM; ultrasonic and warming and heat to 60°C)					
	Preparing Stock Solutions	Solvent Concentration	Mass	1 mg	5 mg	10 mg
			1 mM	2.9218 mL	14.6088 mL	29.2176 mL
			5 mM	0.5844 mL	2.9218 mL	5.8435 mL
10 mM			0.2922 mL	1.4609 mL	2.9218 mL	
Please refer to the solubility information to select the appropriate solvent.						
In Vivo	1. Add each solvent one by one: 10% DMSO >> 90% (20% SBE-β-CD in saline) Solubility: ≥ 1.25 mg/mL (3.65 mM); Clear solution					

BIOLOGICAL ACTIVITY

Description	Alizarin red S indicator (C.I. 58005) is a biochemical reagent that can be used as a biological material or organic compound for life science related research.
-------------	---

Caution: Product has not been fully validated for medical applications. For research use only.

Tel: 609-228-6898

Fax: 609-228-5909

E-mail: tech@MedChemExpress.com

Address: 1 Deer Park Dr, Suite Q, Monmouth Junction, NJ 08852, USA