



# SZABO SCANDIC

Part of Europa Biosite

## Produktinformation



Forschungsprodukte & Biochemikalien



Zellkultur & Verbrauchsmaterial



Diagnostik & molekulare Diagnostik



Laborgeräte & Service

Weitere Information auf den folgenden Seiten!  
See the following pages for more information!



### Lieferung & Zahlungsart

siehe unsere [Liefer- und Versandbedingungen](#)

### Zuschläge

- Mindermengenzuschlag
- Trockeneiszuschlag
- Gefahrgutzuschlag
- Expressversand

### SZABO-SCANDIC HandelsgmbH

Quellenstraße 110, A-1100 Wien

T. +43(0)1 489 3961-0

F. +43(0)1 489 3961-7

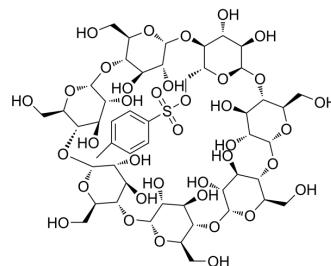
[mail@szabo-scandic.com](mailto:mail@szabo-scandic.com)

[www.szabo-scandic.com](http://www.szabo-scandic.com)

[linkedin.com/company/szaboscandic](https://www.linkedin.com/company/szaboscandic) 

## Mono-(6-p-toluenesulfonyl)- $\beta$ -cyclodextrin

<b>Cat. No.:</b>	HY-W129395		
<b>CAS No.:</b>	67217-55-4		
<b>Molecular Formula:</b>	C <sub>49</sub> H <sub>76</sub> O <sub>37</sub> S		
<b>Molecular Weight:</b>	1289.17		
<b>Target:</b>	Biochemical Assay Reagents		
<b>Pathway:</b>	Others		
<b>Storage:</b>	Powder	-20°C	3 years
		4°C	2 years
	In solvent	-80°C	6 months
		-20°C	1 month



### SOLVENT & SOLUBILITY

#### In Vitro

DMSO : 200 mg/mL (155.14 mM; Need ultrasonic)

Concentration	Mass			
	1 mg	5 mg	10 mg	
<b>1 mM</b>	0.7757 mL	3.8785 mL	7.7569 mL	
<b>5 mM</b>	0.1551 mL	0.7757 mL	1.5514 mL	
<b>10 mM</b>	0.0776 mL	0.3878 mL	0.7757 mL	

Please refer to the solubility information to select the appropriate solvent.

### BIOLOGICAL ACTIVITY

#### Description

Mono-(6-p-toluenesulfonyl)- $\beta$ -cyclodextrin is a biochemical reagent that can be used as a biological material or organic compound for life science related research.

**Caution: Product has not been fully validated for medical applications. For research use only.**

Tel: 609-228-6898

Fax: 609-228-5909

E-mail: tech@MedChemExpress.com

Address: 1 Deer Park Dr, Suite Q, Monmouth Junction, NJ 08852, USA