



# SZABO SCANDIC

Part of Europa Biosite

## Produktinformation



Forschungsprodukte & Biochemikalien



Zellkultur & Verbrauchsmaterial



Diagnostik & molekulare Diagnostik



Laborgeräte & Service

Weitere Information auf den folgenden Seiten!  
See the following pages for more information!



### Lieferung & Zahlungsart

siehe unsere [Liefer- und Versandbedingungen](#)

### Zuschläge

- Mindermengenzuschlag
- Trockeneiszuschlag
- Gefahrgutzuschlag
- Expressversand

### SZABO-SCANDIC HandelsgmbH

Quellenstraße 110, A-1100 Wien

T. +43(0)1 489 3961-0

F. +43(0)1 489 3961-7

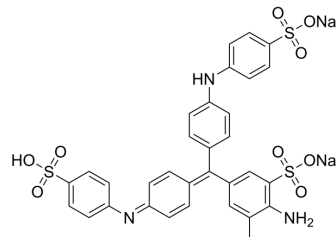
[mail@szabo-scandic.com](mailto:mail@szabo-scandic.com)

[www.szabo-scandic.com](http://www.szabo-scandic.com)

[linkedin.com/company/szaboscandic](https://www.linkedin.com/company/szaboscandic) 

## Aniline Blue sodium

|                           |  |
|---------------------------|--|
| <b>Cat. No.:</b>          | HY-W133919   |
| <b>CAS No.:</b>           | 28631-66-5   |
| <b>Molecular Formula:</b> | C <sub>32</sub> H <sub>25</sub> N <sub>3</sub> Na <sub>2</sub> O <sub>9</sub> S <sub>3</sub>   |
| <b>Molecular Weight:</b>  | 737.73   |
| <b>Target:</b>            | Biochemical Assay Reagents   |
| <b>Pathway:</b>           | Others   |
| <b>Storage:</b>           | 4°C, sealed storage, away from moisture and light<br>* In solvent : -80°C, 6 months; -20°C, 1 month (sealed storage, away from moisture and light) |



### SOLVENT & SOLUBILITY

#### In Vitro

DMSO : 100 mg/mL (135.55 mM; Need ultrasonic)

| Solvent                   | Mass  | Concentration |           |            |
|---------------------------|-------|---------------|-----------|------------|
|                           |       | 1 mg          | 5 mg      | 10 mg      |
| Preparing Stock Solutions | 1 mM  | 1.3555 mL     | 6.7775 mL | 13.5551 mL |
|                           | 5 mM  | 0.2711 mL     | 1.3555 mL | 2.7110 mL  |
|                           | 10 mM | 0.1356 mL     | 0.6778 mL | 1.3555 mL  |

Please refer to the solubility information to select the appropriate solvent.

### BIOLOGICAL ACTIVITY

#### Description

Aniline Blue sodium is a water-soluble dye commonly used as a biological stain for the detection of nucleic acids and proteins in various laboratory procedures such as electrophoresis and microscopy. Aniline Blue sodium has unique chemical properties that allow it to bind to specific cellular components, producing a color change that facilitates their visualization and analysis.

#### In Vitro

Aniline Blue, sodium salt is a biochemical reagent that can be used as a biological material or organic compound for life science related research.

MCE has not independently confirmed the accuracy of these methods. They are for reference only.

**Caution: Product has not been fully validated for medical applications. For research use only.**

Tel: 609-228-6898

Fax: 609-228-5909

E-mail: tech@MedChemExpress.com

Address: 1 Deer Park Dr, Suite Q, Monmouth Junction, NJ 08852, USA