



SZABO SCANDIC

Part of Europa Biosite

Produktinformation



Forschungsprodukte & Biochemikalien



Zellkultur & Verbrauchsmaterial



Diagnostik & molekulare Diagnostik



Laborgeräte & Service

Weitere Information auf den folgenden Seiten!
See the following pages for more information!



Lieferung & Zahlungsart

siehe unsere [Liefer- und Versandbedingungen](#)

Zuschläge

- Mindermengenzuschlag
- Trockeneiszuschlag
- Gefahrgutzuschlag
- Expressversand

SZABO-SCANDIC HandelsgmbH

Quellenstraße 110, A-1100 Wien

T. +43(0)1 489 3961-0

F. +43(0)1 489 3961-7

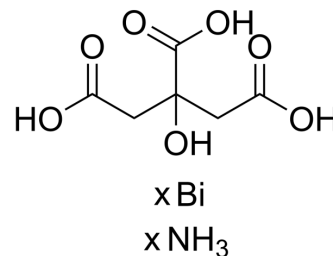
mail@szabo-scandic.com

www.szabo-scandic.com

[linkedin.com/company/szaboscandic](https://www.linkedin.com/company/szaboscandic) 

Ammonium bismuth citrate, 99%

Cat. No.:	HY-W134002
CAS No.:	31886-41-6
Molecular Formula:	$C_6H_8O_7 \cdot xBi \cdot xH_3N$
Target:	Biochemical Assay Reagents
Pathway:	Others
Storage:	Please store the product under the recommended conditions in the Certificate of Analysis.



BIOLOGICAL ACTIVITY

Description

Ammonium bismuth citrate, 99% is a necessary component to produce a selective and stable medium for the isolation of *B. typhosus* and allied organisms. Ammonium bismuth citrate, 99% possesses some inhibitory action on most of the unwanted organisms. Ammonium bismuth citrate, 99% is used in bismuth sulphite glucose glycine yeast (BiGGY) agar^{[1][2]}.

REFERENCES

[1]. S Tyagaraja. A simple modification of Wilson and Blair's medium for the isolation of typhoid and paratyphoid bacilli: (Brilliant green, bismuth-ammonium-citrate and sodium sulphite medium-B.B.S. medium). *J Hyg (Lond)*. 1940 Jul;40(4):414-22.

[2]. Mine Yücesoy, et al. Performance of CHROMAGAR candida and BIGGY agar for identification of yeast species. *Ann Clin Microbiol Antimicrob*. 2003 Oct 29:2:8.

Caution: Product has not been fully validated for medical applications. For research use only.

Tel: 609-228-6898

Fax: 609-228-5909

E-mail: tech@MedChemExpress.com

Address: 1 Deer Park Dr, Suite Q, Monmouth Junction, NJ 08852, USA