



SZABO SCANDIC

Part of Europa Biosite

Produktinformation



Forschungsprodukte & Biochemikalien



Zellkultur & Verbrauchsmaterial



Diagnostik & molekulare Diagnostik



Laborgeräte & Service

Weitere Information auf den folgenden Seiten!
See the following pages for more information!



Lieferung & Zahlungsart

siehe unsere [Liefer- und Versandbedingungen](#)

Zuschläge

- Mindermengenzuschlag
- Trockeneiszuschlag
- Gefahrgutzuschlag
- Expressversand

SZABO-SCANDIC HandelsgmbH

Quellenstraße 110, A-1100 Wien

T. +43(0)1 489 3961-0

F. +43(0)1 489 3961-7

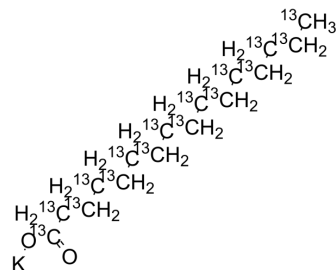
mail@szabo-scandic.com

www.szabo-scandic.com

[linkedin.com/company/szaboscandic](https://www.linkedin.com/company/szaboscandic) 

Hexadecanoate-¹³C₁₆ potassium

Cat. No.:	HY-W134007S1
CAS No.:	1458714-74-3
Molecular Formula:	¹³ C ₁₆ H ₃₁ KO ₂
Molecular Weight:	310.4
Target:	HSP; Isotope-Labeled Compounds
Pathway:	Cell Cycle/DNA Damage; Metabolic Enzyme/Protease; Others
Storage:	4°C, sealed storage, away from moisture and light * In solvent : -80°C, 6 months; -20°C, 1 month (sealed storage, away from moisture and light)



SOLVENT & SOLUBILITY

In Vitro

Ethanol : 10 mg/mL (32.22 mM; Need ultrasonic)

Concentration	Solvent	Mass		
		1 mg	5 mg	10 mg
Preparing Stock Solutions	1 mM	3.2216 mL	16.1082 mL	32.2165 mL
	5 mM	0.6443 mL	3.2216 mL	6.4433 mL
	10 mM	0.3222 mL	1.6108 mL	3.2216 mL

Please refer to the solubility information to select the appropriate solvent.

BIOLOGICAL ACTIVITY

Description

Hexadecanoate-¹³C₁₆ (potassium) is the ¹³C-labeled Hexadecanoate sodium. Hexadecanoate potassium can induce the expression of glucose-regulated protein 78 (GRP78) and CCAAT/enhancer binding protein homologous protein (CHOP) in in mouse granulosa cells[1][2].

REFERENCES

[1]. Russak EM, et al. Impact of Deuterium Substitution on the Pharmacokinetics of Pharmaceuticals. Ann Pharmacother. 2019;53(2):211-216.

Caution: Product has not been fully validated for medical applications. For research use only.

Tel: 609-228-6898

Fax: 609-228-5909

E-mail: tech@MedChemExpress.com

Address: 1 Deer Park Dr, Suite Q, Monmouth Junction, NJ 08852, USA