



SZABO SCANDIC

Part of Europa Biosite

Produktinformation



Forschungsprodukte & Biochemikalien



Zellkultur & Verbrauchsmaterial



Diagnostik & molekulare Diagnostik



Laborgeräte & Service

Weitere Information auf den folgenden Seiten!
See the following pages for more information!



Lieferung & Zahlungsart

siehe unsere [Liefer- und Versandbedingungen](#)

Zuschläge

- Mindermengenzuschlag
- Trockeneiszuschlag
- Gefahrgutzuschlag
- Expressversand

SZABO-SCANDIC HandelsgmbH

Quellenstraße 110, A-1100 Wien

T. +43(0)1 489 3961-0

F. +43(0)1 489 3961-7

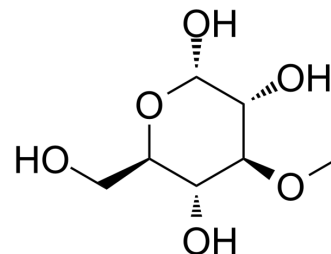
mail@szabo-scandic.com

www.szabo-scandic.com

[linkedin.com/company/szaboscandic](https://www.linkedin.com/company/szaboscandic) 

3-O-Methyl-D-glucopyranose

| | | | |
|--------------------|---|-------|----------|
| Cat. No.: | HY-W145482 | | |
| CAS No.: | 13224-94-7 | | |
| Molecular Formula: | C ₇ H ₁₄ O ₆ | | |
| Molecular Weight: | 194.18 | | |
| Target: | Biochemical Assay Reagents | | |
| Pathway: | Others | | |
| Storage: | Powder | -20°C | 3 years |
| | | 4°C | 2 years |
| | In solvent | -80°C | 6 months |
| | | -20°C | 1 month |



SOLVENT & SOLUBILITY

In Vitro

H₂O : 100 mg/mL (514.99 mM; Need ultrasonic)

DMSO : ≥ 50 mg/mL (257.49 mM)

* "≥" means soluble, but saturation unknown.

| | Solvent Concentration | Mass | | |
|------------------------------|--------------------------|-----------|------------|------------|
| | | 1 mg | 5 mg | 10 mg |
| Preparing Stock Solutions | 1 mM | 5.1499 mL | 25.7493 mL | 51.4986 mL |
| | 5 mM | 1.0300 mL | 5.1499 mL | 10.2997 mL |
| | 10 mM | 0.5150 mL | 2.5749 mL | 5.1499 mL |

Please refer to the solubility information to select the appropriate solvent.

BIOLOGICAL ACTIVITY

Description

3-O-Methyl-D-glucopyranose is a biochemical reagent that can be used as a biological material or organic compound for life science related research.

Caution: Product has not been fully validated for medical applications. For research use only.

Tel: 609-228-6898

Fax: 609-228-5909

E-mail: tech@MedChemExpress.com

Address: 1 Deer Park Dr, Suite Q, Monmouth Junction, NJ 08852, USA