



# SZABO SCANDIC

Part of Europa Biosite

## Produktinformation



Forschungsprodukte & Biochemikalien



Zellkultur & Verbrauchsmaterial



Diagnostik & molekulare Diagnostik



Laborgeräte & Service

Weitere Information auf den folgenden Seiten!  
See the following pages for more information!



### Lieferung & Zahlungsart

siehe unsere [Liefer- und Versandbedingungen](#)

### Zuschläge

- Mindermengenzuschlag
- Trockeneiszuschlag
- Gefahrgutzuschlag
- Expressversand

### SZABO-SCANDIC HandelsgmbH

Quellenstraße 110, A-1100 Wien

T. +43(0)1 489 3961-0

F. +43(0)1 489 3961-7

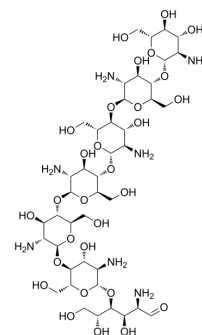
[mail@szabo-scandic.com](mailto:mail@szabo-scandic.com)

[www.szabo-scandic.com](http://www.szabo-scandic.com)

[linkedin.com/company/szaboscandic](https://www.linkedin.com/company/szaboscandic) 

## Chitoheptaose

Cat. No.:	HY-W145695
CAS No.:	68232-35-9
Molecular Formula:	$C_{42}H_{79}N_7O_{29}$
Molecular Weight:	1146.11
Target:	Biochemical Assay Reagents
Pathway:	Others
Storage:	-20°C, stored under nitrogen * In solvent : -80°C, 6 months; -20°C, 1 month (stored under nitrogen)



### BIOLOGICAL ACTIVITY

#### Description

Chitoheptaose is a chitosan oligosaccharide. Chitoheptaose is capable of extracting exoskeletons from crustaceans, such as the shells of crabs, shrimp and lobsters. Chitoheptaose has antioxidant, anti-inflammatory and anti-apoptotic activities and can be used in the study of myocarditis. Chitoheptaose has cardioprotective effects and improves cardiac parameters (left ventricular internal size, end-systolic and end-diastolic, ejection fraction and shortening fraction), inflammatory cytokines (IL-1 $\beta$ ) in vanishing models<sup>[1]</sup>.

### REFERENCES

[1]. Zhao Q, et al. Chitoheptaose Promotes Heart Rehabilitation in a Rat Myocarditis Model by Improving Antioxidant, Anti-Inflammatory, and Antiapoptotic Properties. *Oxid Med Cell Longev*. 2020 Apr 11;2020:2394704.

**Caution: Product has not been fully validated for medical applications. For research use only.**

Tel: 609-228-6898

Fax: 609-228-5909

E-mail: tech@MedChemExpress.com

Address: 1 Deer Park Dr, Suite Q, Monmouth Junction, NJ 08852, USA