



SZABO SCANDIC

Part of Europa Biosite

Produktinformation



Forschungsprodukte & Biochemikalien



Zellkultur & Verbrauchsmaterial



Diagnostik & molekulare Diagnostik



Laborgeräte & Service

Weitere Information auf den folgenden Seiten!
See the following pages for more information!



Lieferung & Zahlungsart

siehe unsere [Liefer- und Versandbedingungen](#)

Zuschläge

- Mindermengenzuschlag
- Trockeneiszuschlag
- Gefahrgutzuschlag
- Expressversand

SZABO-SCANDIC HandelsgmbH

Quellenstraße 110, A-1100 Wien

T. +43(0)1 489 3961-0

F. +43(0)1 489 3961-7

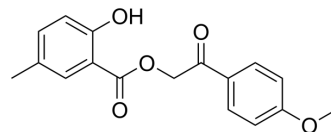
mail@szabo-scandic.com

www.szabo-scandic.com

[linkedin.com/company/szaboscandic](https://www.linkedin.com/company/szaboscandic) 

KLF10-IN-1

Cat. No.:	HY-W181026
CAS No.:	1197834-98-2
Molecular Formula:	C ₁₇ H ₁₆ O ₅
Molecular Weight:	300.31
Target:	Others
Pathway:	Others
Storage:	Please store the product under the recommended conditions in the Certificate of Analysis.



BIOLOGICAL ACTIVITY

Description	KLF10-IN-1 (#48-15) is a KLF10 inhibitor with an IC ₅₀ value of 40 μM against the KLF10 reporter gene. KLF10-IN-1 can suppress KLF10-DNA binding and transcriptional activity, block the conversion of CD4+CD25 ⁻ T cells into CD4+CD25 ⁺ T regulatory cells, and downregulate the expression of KLF10 target genes. KLF10-IN-1 can be utilized as a useful mechanistic probe for studying KLF10-mediated effects and T regulatory cell biology ^[1] .
IC ₅₀ & Target	IC50: Krüppel-like Factor 10 (KLF10) ^[1] .

REFERENCES

[1]. Khedkar SA, et al. Discovery of small molecule inhibitors to Krüppel-like factor 10 (KLF10): implications for modulation of T regulatory cell differentiation. *J Med Chem.* 2015;58(3):1466-1478.

Caution: Product has not been fully validated for medical applications. For research use only.

Tel: 609-228-6898

Fax: 609-228-5909

E-mail: tech@MedChemExpress.com

Address: 1 Deer Park Dr, Suite Q, Monmouth Junction, NJ 08852, USA