



SZABO SCANDIC

Part of Europa Biosite

Produktinformation



Forschungsprodukte & Biochemikalien



Zellkultur & Verbrauchsmaterial



Diagnostik & molekulare Diagnostik



Laborgeräte & Service

Weitere Information auf den folgenden Seiten!
See the following pages for more information!



Lieferung & Zahlungsart

siehe unsere [Liefer- und Versandbedingungen](#)

Zuschläge

- Mindermengenzuschlag
- Trockeneiszuschlag
- Gefahrgutzuschlag
- Expressversand

SZABO-SCANDIC HandelsgmbH

Quellenstraße 110, A-1100 Wien

T. +43(0)1 489 3961-0

F. +43(0)1 489 3961-7

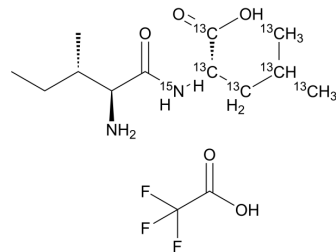
mail@szabo-scandic.com

www.szabo-scandic.com

[linkedin.com/company/szaboscandic](https://www.linkedin.com/company/szaboscandic) 

Ile-(Leu-¹³C₆, ¹⁵N)-OH

Cat. No.:	HY-W269700S
Molecular Formula:	C ₈ ¹³ C ₆ H ₂₅ F ₃ N ¹⁵ NO ₅
Molecular Weight:	365.3
Target:	Isotope-Labeled Compounds
Pathway:	Others
Storage:	Please store the product under the recommended conditions in the Certificate of Analysis.



BIOLOGICAL ACTIVITY

Description

Ile-(Leu-¹³C₆,¹⁵N)-OH (TFA) is ¹³C- and ¹⁵N-labeled L-Isoleucyl-L-leucine (HY-W269700). L-Isoleucyl-L-leucine has a role as a metabolite and can be used to inhibit movement-induced muscle damage and muscle defective condition.

REFERENCES

[1]. Andrea Briones, et al. An SI-traceable reference material for virus-like particles. *iScience*. 2022 Apr 25;25(5):104294.

Caution: Product has not been fully validated for medical applications. For research use only.

Tel: 609-228-6898

Fax: 609-228-5909

E-mail: tech@MedChemExpress.com

Address: 1 Deer Park Dr, Suite Q, Monmouth Junction, NJ 08852, USA