



SZABO SCANDIC

Part of Europa Biosite

Produktinformation



Forschungsprodukte & Biochemikalien



Zellkultur & Verbrauchsmaterial



Diagnostik & molekulare Diagnostik



Laborgeräte & Service

Weitere Information auf den folgenden Seiten!
See the following pages for more information!



Lieferung & Zahlungsart

siehe unsere [Liefer- und Versandbedingungen](#)

Zuschläge

- Mindermengenzuschlag
- Trockeneiszuschlag
- Gefahrgutzuschlag
- Expressversand

SZABO-SCANDIC HandelsgmbH

Quellenstraße 110, A-1100 Wien

T. +43(0)1 489 3961-0

F. +43(0)1 489 3961-7

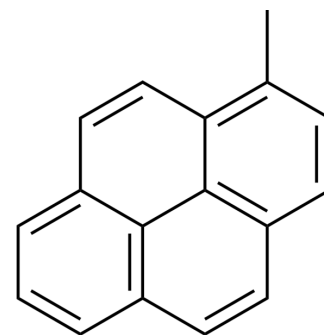
mail@szabo-scandic.com

www.szabo-scandic.com

[linkedin.com/company/szaboscandic](https://www.linkedin.com/company/szaboscandic) 

1-Methylpyrene

Cat. No.:	HY-W271064
CAS No.:	2381-21-7
Molecular Formula:	C ₁₇ H ₁₂
Molecular Weight:	216.28
Target:	Fluorescent Dye
Pathway:	Others
Storage:	4°C, protect from light * In solvent : -80°C, 6 months; -20°C, 1 month (protect from light)



SOLVENT & SOLUBILITY

In Vitro

DMSO : 4.35 mg/mL (20.11 mM; ultrasonic and warming and heat to 60°C)

Concentration	Solvent	Mass		
		1 mg	5 mg	10 mg
Preparing Stock Solutions	1 mM	4.6236 mL	23.1182 mL	46.2364 mL
	5 mM	0.9247 mL	4.6236 mL	9.2473 mL
	10 mM	0.4624 mL	2.3118 mL	4.6236 mL

Please refer to the solubility information to select the appropriate solvent.

BIOLOGICAL ACTIVITY

Description

1-Methylpyrene is a ubiquitous environmental pollutant and rodent carcinogen. Its mutagenic activity depends on sequential activation by various CYP and sulfotransferase (SULT) enzymes. 1-Methylpyrene induces chromosome loss and mitotic disturbance, proba

REFERENCES

- [1]. Monien BH, et al. Time course of hepatic 1-methylpyrene DNA adducts in rats determined by isotope dilution LC-MS/MS and 32P-postlabeling. *Chem Res Toxicol*. 2008 Oct;21(10):2017-25.
- [2]. Hang Yu, et al. 1-Methylpyrene induces chromosome loss and mitotic apparatus damage in a Chinese hamster V79-derived cell line expressing both human CYP1A2 and sulfotransferase 1A1. *Chem Biol Interact*. 2020 Dec 1;332:109283.

Caution: Product has not been fully validated for medical applications. For research use only.

Tel: 609-228-6898

Fax: 609-228-5909

E-mail: tech@MedChemExpress.com

Address: 1 Deer Park Dr, Suite Q, Monmouth Junction, NJ 08852, USA