



SZABO SCANDIC

Part of Europa Biosite

Produktinformation



Forschungsprodukte & Biochemikalien



Zellkultur & Verbrauchsmaterial



Diagnostik & molekulare Diagnostik



Laborgeräte & Service

Weitere Information auf den folgenden Seiten!
See the following pages for more information!



Lieferung & Zahlungsart

siehe unsere [Liefer- und Versandbedingungen](#)

Zuschläge

- Mindermengenzuschlag
- Trockeneiszuschlag
- Gefahrgutzuschlag
- Expressversand

SZABO-SCANDIC HandelsgmbH

Quellenstraße 110, A-1100 Wien

T. +43(0)1 489 3961-0

F. +43(0)1 489 3961-7

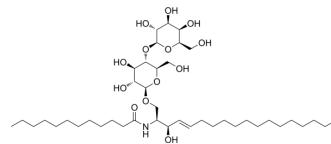
mail@szabo-scandic.com

www.szabo-scandic.com

[linkedin.com/company/szaboscandic](https://www.linkedin.com/company/szaboscandic) 

Trihexosylceramide (d18:1/12:0)

Cat. No.:	HY-W341625
CAS No.:	474943-80-1
Molecular Formula:	C ₄₂ H ₇₉ NO ₁₃
Molecular Weight:	806.08
Target:	Others
Pathway:	Others
Storage:	-20°C, protect from light * In solvent : -80°C, 6 months; -20°C, 1 month (protect from light)



SOLVENT & SOLUBILITY

In Vitro	THF : 0.2 mg/mL (0.25 mM; Need ultrasonic)
----------	--

BIOLOGICAL ACTIVITY

Description	Trihexosylceramide (d18:1/12:0) is a type of Trihexosylceramide. In the renal tissue of heterozygous Fabry's disease, the cytoplasm of glomerular epithelial cells appears foamy. Trihexosylceramide accumulated in glomerular epithelial cells as identified by immunostaining ^{[1][2]} .
-------------	---

REFERENCES

- [1]. Wang JR, et al. Improved sphingolipidomic approach based on ultra-high performance liquid chromatography and multiple mass spectrometries with application to cellular neurotoxicity. *Anal Chem.* 2014 Jun 17;86(12):5688-96.
- [2]. Fukushima M, et al. A female heterozygous patient with Fabry's disease with renal accumulation of trihexosylceramide detected with a monoclonal antibody. *Am J Kidney Dis.* 1995 Dec;26(6):952-5.

Caution: Product has not been fully validated for medical applications. For research use only.

Tel: 609-228-6898

Fax: 609-228-5909

E-mail: tech@MedChemExpress.com

Address: 1 Deer Park Dr, Suite Q, Monmouth Junction, NJ 08852, USA