



# SZABO SCANDIC

Part of Europa Biosite

## Produktinformation



Forschungsprodukte & Biochemikalien



Zellkultur & Verbrauchsmaterial



Diagnostik & molekulare Diagnostik



Laborgeräte & Service

Weitere Information auf den folgenden Seiten!  
See the following pages for more information!



### Lieferung & Zahlungsart

siehe unsere [Liefer- und Versandbedingungen](#)

### Zuschläge

- Mindermengenzuschlag
- Trockeneiszuschlag
- Gefahrgutzuschlag
- Expressversand

### SZABO-SCANDIC HandelsgmbH

Quellenstraße 110, A-1100 Wien

T. +43(0)1 489 3961-0

F. +43(0)1 489 3961-7

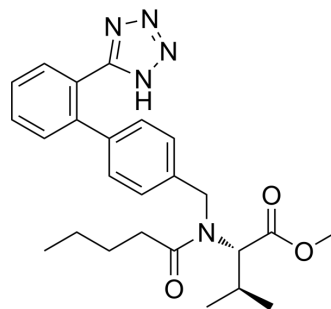
[mail@szabo-scandic.com](mailto:mail@szabo-scandic.com)

[www.szabo-scandic.com](http://www.szabo-scandic.com)

[linkedin.com/company/szaboscandic](https://www.linkedin.com/company/szaboscandic) 

## Valsartan methyl ester

Cat. No.:	HY-W414915
CAS No.:	137863-17-3
Molecular Formula:	C <sub>25</sub> H <sub>31</sub> N <sub>5</sub> O <sub>3</sub>
Molecular Weight:	449.55
Target:	Angiotensin Receptor
Pathway:	GPCR/G Protein
Storage:	Please store the product under the recommended conditions in the Certificate of Analysis.



### BIOLOGICAL ACTIVITY

#### Description

Valsartan methyl ester (Compound 3) is a derivative of Valsartan (HY-18204). Valsartan methyl ester is an orally active antagonist for angiotensin II, that inhibits angiotensin II (IC<sub>50</sub> of 0.06 μM), angiotensin II-induced pressor response in rabbit aorta (IC<sub>50</sub> of 0.068 μM) and angiotensin II-induced pressor response in the pithed rat model (10% inhibition at 10 mg/kg, p.o.)<sup>[1]</sup>.

### REFERENCES

[1]. Bühlmyer P, et al., Valsartan, a potent, orally active angiotensin II antagonist developed from the structurally new amino acid series[J]. Bioorganic & Medicinal Chemistry Letters, 1994, 4(1): 29-34.

**Caution: Product has not been fully validated for medical applications. For research use only.**

Tel: 609-228-6898

Fax: 609-228-5909

E-mail: tech@MedChemExpress.com

Address: 1 Deer Park Dr, Suite Q, Monmouth Junction, NJ 08852, USA