



# SZABO SCANDIC

Part of Europa Biosite

## Produktinformation



Forschungsprodukte & Biochemikalien



Zellkultur & Verbrauchsmaterial



Diagnostik & molekulare Diagnostik



Laborgeräte & Service

Weitere Information auf den folgenden Seiten!  
See the following pages for more information!



### Lieferung & Zahlungsart

siehe unsere [Liefer- und Versandbedingungen](#)

### Zuschläge

- Mindermengenzuschlag
- Trockeneiszuschlag
- Gefahrgutzuschlag
- Expressversand

### SZABO-SCANDIC HandelsgmbH

Quellenstraße 110, A-1100 Wien

T. +43(0)1 489 3961-0

F. +43(0)1 489 3961-7

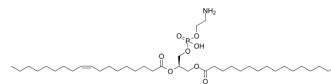
[mail@szabo-scandic.com](mailto:mail@szabo-scandic.com)

[www.szabo-scandic.com](http://www.szabo-scandic.com)

[linkedin.com/company/szaboscandic](https://www.linkedin.com/company/szaboscandic) 

## 1-Palmitoyl-2-oleoyl-sn-glycero-3-PE

<b>Cat. No.:</b>	HY-W583868		
<b>CAS No.:</b>	26662-94-2		
<b>Molecular Formula:</b>	C <sub>39</sub> H <sub>76</sub> NO <sub>8</sub> P		
<b>Molecular Weight:</b>	718		
<b>Target:</b>	Liposome		
<b>Pathway:</b>	Metabolic Enzyme/Protease		
<b>Storage:</b>	Powder	-20°C	3 years
		4°C	2 years
	In solvent	-80°C	6 months
		-20°C	1 month



### SOLVENT & SOLUBILITY

#### In Vitro

Methanol : 2.5 mg/mL (3.48 mM; ultrasonic and warming and heat to 60°C)

Solvent	Mass	Concentration		
		1 mg	5 mg	10 mg
Preparing Stock Solutions	1 mM	1.3928 mL	6.9638 mL	13.9276 mL
	5 mM	---	---	---
	10 mM	---	---	---

Please refer to the solubility information to select the appropriate solvent.

### BIOLOGICAL ACTIVITY

#### Description

1-Palmitoyl-2-oleoyl-sn-glycero-3-PE is a phospholipid, and can be used for drug delivery<sup>[1]</sup>.

### REFERENCES

[1]. Álvarez-Benedicto E, et al. Optimization of phospholipid chemistry for improved lipid nanoparticle (LNP) delivery of messenger RNA (mRNA). *Biomater Sci.* 2022 Jan 18;10(2):549-559.

**Caution: Product has not been fully validated for medical applications. For research use only.**

Tel: 609-228-6898

Fax: 609-228-5909

E-mail: tech@MedChemExpress.com

Address: 1 Deer Park Dr, Suite Q, Monmouth Junction, NJ 08852, USA