



SZABO SCANDIC

Part of Europa Biosite

Produktinformation



Forschungsprodukte & Biochemikalien



Zellkultur & Verbrauchsmaterial



Diagnostik & molekulare Diagnostik



Laborgeräte & Service

Weitere Information auf den folgenden Seiten!
See the following pages for more information!



Lieferung & Zahlungsart

siehe unsere [Liefer- und Versandbedingungen](#)

Zuschläge

- Mindermengenzuschlag
- Trockeneiszuschlag
- Gefahrgutzuschlag
- Expressversand

SZABO-SCANDIC HandelsgmbH

Quellenstraße 110, A-1100 Wien

T. +43(0)1 489 3961-0

F. +43(0)1 489 3961-7

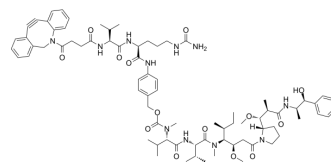
mail@szabo-scandic.com

www.szabo-scandic.com

[linkedin.com/company/szaboscandic](https://www.linkedin.com/company/szaboscandic) 

DBCO-Val-Cit-PAB-MMAE

| | | | |
|---------------------------|--|-------|----------|
| Cat. No.: | HY-W591408 | | |
| CAS No.: | 2768446-73-5 | | |
| Molecular Formula: | C ₇₇ H ₁₀₇ N ₁₁ O ₁₄ | | |
| Molecular Weight: | 1410.74 | | |
| Target: | Drug-Linker Conjugates for ADC | | |
| Pathway: | Antibody-drug Conjugate/ADC Related | | |
| Storage: | Powder | -20°C | 3 years |
| | | 4°C | 2 years |
| | In solvent | -80°C | 6 months |
| | | -20°C | 1 month |



SOLVENT & SOLUBILITY

In Vitro

DMSO : 33.33 mg/mL (23.63 mM; Need ultrasonic)

| Concentration | Solvent | Mass | | |
|---------------------------|---------|-----------|-----------|-----------|
| | | 1 mg | 5 mg | 10 mg |
| Preparing Stock Solutions | 1 mM | 0.7088 mL | 3.5442 mL | 7.0885 mL |
| | 5 mM | 0.1418 mL | 0.7088 mL | 1.4177 mL |
| | 10 mM | 0.0709 mL | 0.3544 mL | 0.7088 mL |

Please refer to the solubility information to select the appropriate solvent.

BIOLOGICAL ACTIVITY

Description

DBCO-Val-Cit-PAB-MMAE is a drug-linker conjugate, which can be used for the synthesis of ADC molecules. MMAE (HY-15162) is a tubulin inhibitor, which can be used as an ADC toxin. DBCO-Val-Cit-PAB is the linker with the electrophilic group^[1].

REFERENCES

[1]. Huang W, et al., Affinity fragment-directed cleavable fragments, their design, synthesis and use in the preparation of site-directed drug conjugates. CN116836235 A.

Caution: Product has not been fully validated for medical applications. For research use only.

Tel: 609-228-6898

Fax: 609-228-5909

E-mail: tech@MedChemExpress.com

Address: 1 Deer Park Dr, Suite Q, Monmouth Junction, NJ 08852, USA