



SZABO SCANDIC

Part of Europa Biosite

Produktinformation



Forschungsprodukte & Biochemikalien



Zellkultur & Verbrauchsmaterial



Diagnostik & molekulare Diagnostik



Laborgeräte & Service

Weitere Information auf den folgenden Seiten!
See the following pages for more information!



Lieferung & Zahlungsart

siehe unsere [Liefer- und Versandbedingungen](#)

Zuschläge

- Mindermengenzuschlag
- Trockeneiszuschlag
- Gefahrgutzuschlag
- Expressversand

SZABO-SCANDIC HandelsgmbH

Quellenstraße 110, A-1100 Wien

T. +43(0)1 489 3961-0

F. +43(0)1 489 3961-7

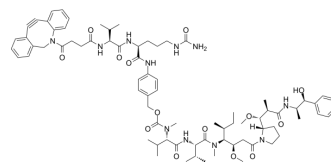
mail@szabo-scandic.com

www.szabo-scandic.com

[linkedin.com/company/szaboscandic](https://www.linkedin.com/company/szaboscandic) 

DBCO-Val-Cit-PAB-MMAE

Cat. No.:	HY-W591408
CAS No.:	2768446-73-5
Molecular Formula:	C ₇₇ H ₁₀₇ N ₁₁ O ₁₄
Molecular Weight:	1410.74
Target:	Drug-Linker Conjugates for ADC
Pathway:	Antibody-drug Conjugate/ADC Related
Storage:	Please store the product under the recommended conditions in the Certificate of Analysis.



BIOLOGICAL ACTIVITY

Description

DBCO-Val-Cit-PAB-MMAE is a drug-linker conjugate, which can be used for the synthesis of ADC molecules. MMAE (HY-15162) is a tubulin inhibitor, which can be used as an ADC toxin. DBCO-Val-Cit-PAB is the linker with the electrophilic group^[1].

REFERENCES

[1]. Huang W, et al., Affinity fragment-directed cleavable fragments, their design, synthesis and use in the preparation of site-directed drug conjugates. CN116836235 A.

Caution: Product has not been fully validated for medical applications. For research use only.

Tel: 609-228-6898

Fax: 609-228-5909

E-mail: tech@MedChemExpress.com

Address: 1 Deer Park Dr, Suite Q, Monmouth Junction, NJ 08852, USA