



SZABO SCANDIC

Part of Europa Biosite

Produktinformation



Forschungsprodukte & Biochemikalien



Zellkultur & Verbrauchsmaterial



Diagnostik & molekulare Diagnostik



Laborgeräte & Service

Weitere Information auf den folgenden Seiten!
See the following pages for more information!



Lieferung & Zahlungsart

siehe unsere [Liefer- und Versandbedingungen](#)

Zuschläge

- Mindermengenzuschlag
- Trockeneiszuschlag
- Gefahrgutzuschlag
- Expressversand

SZABO-SCANDIC HandelsgmbH

Quellenstraße 110, A-1100 Wien

T. +43(0)1 489 3961-0

F. +43(0)1 489 3961-7

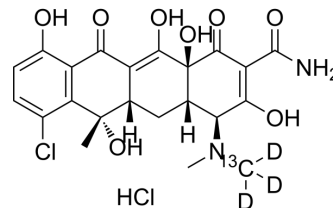
mail@szabo-scandic.com

www.szabo-scandic.com

[linkedin.com/company/szaboscandic](https://www.linkedin.com/company/szaboscandic) 

Chlortetracycline-¹³C,₃D₃ hydrochloride

Cat. No.:	HY-W653977
Molecular Formula:	C ₂₁ ¹³ CH ₂₁ D ₃ Cl ₂ N ₂ O ₈
Molecular Weight:	519.35
Target:	Isotope-Labeled Compounds; Antibiotic; Bacterial; Parasite
Pathway:	Others; Anti-infection
Storage:	Please store the product under the recommended conditions in the Certificate of Analysis.



BIOLOGICAL ACTIVITY

Description

Chlortetracycline-¹³C,₃D₃ hydrochloride (7-Chlorotetracycline-¹³C,₃D₃ hydrochloride) is the ¹³C- and deuterium labeled Chlortetracycline hydrochloride (HY-B1327). Chlortetracycline hydrochloride is an orally active, selective antibiotic, that inhibits methanogenic bacteria through inhibition of bacterial protein synthesis. Chlortetracycline hydrochloride is a specific and potent calcium ionophore antibiotic, that inhibits binding of aminoacyl-tRNA to ribosomes^{[1][2][3][4][5]}.

REFERENCES

- [1]. Russak EM, et al. Impact of Deuterium Substitution on the Pharmacokinetics of Pharmaceuticals. *Ann Pharmacother*. 2019;53(2):211-216.
- [2]. Elmund GK, et al. Role of excreted chlortetracycline in modifying the decomposition process in feedlot waste. *Bull Environ Contam Toxicol*. 1971 Mar-Apr;6(2):129-32.
- [3]. Saling PM, et al. Mouse gamete interactions during fertilization in vitro. Chlortetracycline as a fluorescent probe for the mouse sperm acrosome reaction. *J Cell Biol*. 1979 Dec;83(3):544-55.
- [4]. Reyes-Contreras C, et al. Methanogenic toxicity evaluation of chlortetracycline hydrochloride[J]. *Electronic Journal of Biotechnology*, 2015, 18(6): 445-450.
- [5]. Liu D, et al. Synthesis and evaluation of bisulfate/mesylate-conjugated chlortetracycline with high solubility and bioavailability[J]. *Acta Pharm*. 2020 Dec 1;70(4):483-498.

Caution: Product has not been fully validated for medical applications. For research use only.

Tel: 609-228-6898

Fax: 609-228-5909

E-mail: tech@MedChemExpress.com

Address: 1 Deer Park Dr, Suite Q, Monmouth Junction, NJ 08852, USA