



# SZABO SCANDIC

Part of Europa Biosite

## Produktinformation



Forschungsprodukte & Biochemikalien



Zellkultur & Verbrauchsmaterial



Diagnostik & molekulare Diagnostik



Laborgeräte & Service

Weitere Information auf den folgenden Seiten!  
See the following pages for more information!



### Lieferung & Zahlungsart

siehe unsere [Liefer- und Versandbedingungen](#)

### Zuschläge

- Mindermengenzuschlag
- Trockeneiszuschlag
- Gefahrgutzuschlag
- Expressversand

### SZABO-SCANDIC HandelsgmbH

Quellenstraße 110, A-1100 Wien

T. +43(0)1 489 3961-0

F. +43(0)1 489 3961-7

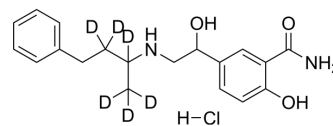
[mail@szabo-scandic.com](mailto:mail@szabo-scandic.com)

[www.szabo-scandic.com](http://www.szabo-scandic.com)

[linkedin.com/company/szaboscandic](https://www.linkedin.com/company/szaboscandic) 

## Labetalol-d<sub>6</sub> hydrochloride

Cat. No.:	HY-W728545
Molecular Formula:	C <sub>19</sub> H <sub>19</sub> D <sub>6</sub> ClN <sub>2</sub> O <sub>3</sub>
Molecular Weight:	370.9
Target:	Isotope-Labeled Compounds
Pathway:	Others
Storage:	Please store the product under the recommended conditions in the Certificate of Analysis.



### BIOLOGICAL ACTIVITY

#### Description

Labetalol-d<sub>6</sub> hydrochloride (AH5158-d<sub>6</sub> hydrochloride; Sch-15719W-d<sub>6</sub>) is a deuterium labeled Labetalol (HY-121383). Labetalol is an orally active  $\alpha$ 1- and  $\beta$ -adrenergic receptors competitive antagonist, which exhibits anti-hypertensive property<sup>[1]</sup>.

### REFERENCES

[1]. Brogden RN, et al. Labetalol: a review of its pharmacology and therapeutic use in hypertension. *Drugs*. 1978;15(4):251-270.

**Caution: Product has not been fully validated for medical applications. For research use only.**

Tel: 609-228-6898

Fax: 609-228-5909

E-mail: tech@MedChemExpress.com

Address: 1 Deer Park Dr, Suite Q, Monmouth Junction, NJ 08852, USA