



# SZABO SCANDIC

Part of Europa Biosite

## Produktinformation



Forschungsprodukte & Biochemikalien



Zellkultur & Verbrauchsmaterial



Diagnostik & molekulare Diagnostik



Laborgeräte & Service

Weitere Information auf den folgenden Seiten!  
See the following pages for more information!



### Lieferung & Zahlungsart

siehe unsere [Liefer- und Versandbedingungen](#)

### Zuschläge

- Mindermengenzuschlag
- Trockeneiszuschlag
- Gefahrgutzuschlag
- Expressversand

### SZABO-SCANDIC HandelsgmbH

Quellenstraße 110, A-1100 Wien

T. +43(0)1 489 3961-0

F. +43(0)1 489 3961-7

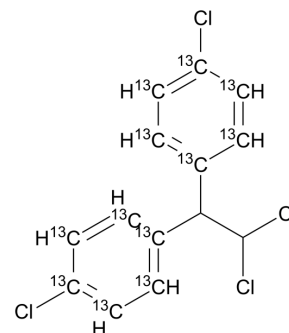
[mail@szabo-scandic.com](mailto:mail@szabo-scandic.com)

[www.szabo-scandic.com](http://www.szabo-scandic.com)

[linkedin.com/company/szaboscandic](https://www.linkedin.com/company/szaboscandic) 

## p,p'-DDD-<sup>13</sup>C<sub>12</sub>

<b>Cat. No.:</b>	HY-W750297
<b>CAS No.:</b>	1571957-95-3
<b>Molecular Formula:</b>	C <sub>2</sub> <sup>13</sup> C <sub>12</sub> H <sub>10</sub> Cl <sub>4</sub>
<b>Molecular Weight:</b>	331.95
<b>Target:</b>	Isotope-Labeled Compounds; Drug Metabolite
<b>Pathway:</b>	Others; Metabolic Enzyme/Protease
<b>Storage:</b>	Please store the product under the recommended conditions in the Certificate of Analysis.



### BIOLOGICAL ACTIVITY

#### Description

p,p'-DDD-<sup>13</sup>C<sub>12</sub> is <sup>13</sup>C labeled p,p'-DDD. p,p'-DDD is a major metabolite of p,p'-DDT. p,p'-DDD occurs in the feces and livers of rats, that are given p,p'-DDT by stomach tube, but not of rats injected intraperitoneally with p,p'-DDT<sup>[1][2][3]</sup>.

### REFERENCES

- [1]. Russak EM, et al. Impact of Deuterium Substitution on the Pharmacokinetics of Pharmaceuticals. *Ann Pharmacother*. 2019 Feb;53(2):211-216.
- [2]. Mendel JL, et al. Conversion of p,p'-DDT to p,p'-DDD by intestinal flora of the rat. *Science*. 1966;151(3717):1527-1528.
- [3]. Gerić M, et al. Cytogenetic status of human lymphocytes after exposure to low concentrations of p,p'-DDT, and its metabolites (p,p'-DDE, and p,p'-DDD) in vitro. *Chemosphere*. 2012;87(11):1288-1294.

**Caution: Product has not been fully validated for medical applications. For research use only.**

Tel: 609-228-6898

Fax: 609-228-5909

E-mail: tech@MedChemExpress.com

Address: 1 Deer Park Dr, Suite Q, Monmouth Junction, NJ 08852, USA