



# SZABO SCANDIC

Part of Europa Biosite

## Produktinformation



Forschungsprodukte & Biochemikalien



Zellkultur & Verbrauchsmaterial



Diagnostik & molekulare Diagnostik



Laborgeräte & Service

Weitere Information auf den folgenden Seiten!  
See the following pages for more information!



### Lieferung & Zahlungsart

siehe unsere [Liefer- und Versandbedingungen](#)

### Zuschläge

- Mindermengenzuschlag
- Trockeneiszuschlag
- Gefahrgutzuschlag
- Expressversand

### SZABO-SCANDIC HandelsgmbH

Quellenstraße 110, A-1100 Wien

T. +43(0)1 489 3961-0

F. +43(0)1 489 3961-7

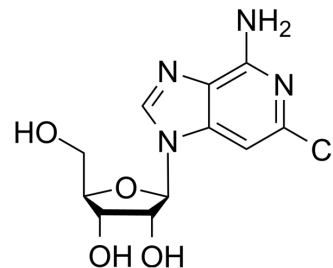
[mail@szabo-scandic.com](mailto:mail@szabo-scandic.com)

[www.szabo-scandic.com](http://www.szabo-scandic.com)

[linkedin.com/company/szaboscandic](https://www.linkedin.com/company/szaboscandic) 

## 2-Chloro-3-deazaadenosine

Cat. No.:	HY-W777125
CAS No.:	40656-71-1
Molecular Formula:	C <sub>11</sub> H <sub>13</sub> ClN <sub>4</sub> O <sub>4</sub>
Molecular Weight:	300.7
Target:	Adenosine Receptor
Pathway:	GPCR/G Protein
Storage:	Please store the product under the recommended conditions in the Certificate of Analysis.



### BIOLOGICAL ACTIVITY

<b>Description</b>	2-Chloro-3-deazaadenosine is agonists for adenosine receptor, with K <sub>i</sub> s of 0.3, 0.08, 25.5 and 1.9 μM, for A <sub>1</sub> , A <sub>2A</sub> , A <sub>2B</sub> , and A <sub>3</sub> receptors, respectively <sup>[1]</sup> .			
<b>IC<sub>50</sub> &amp; Target</b>	A <sub>2A</sub> 0.08 μM (K <sub>i</sub> )	A <sub>1</sub> 0.3 μM (K <sub>i</sub> )	A <sub>3</sub> 1.9 μM (K <sub>i</sub> )	A <sub>2B</sub> 25.5 μM (K <sub>i</sub> )

### REFERENCES

[1]. Linden J, et al., Characterization of human A(2B) adenosine receptors: radioligand binding, western blotting, and coupling to G(q) in human embryonic kidney 293 cells and HMC-1 mast cells. Mol Pharmacol. 1999 Oct;56(4):705-13.

**Caution: Product has not been fully validated for medical applications. For research use only.**

Tel: 609-228-6898

Fax: 609-228-5909

E-mail: tech@MedChemExpress.com

Address: 1 Deer Park Dr, Suite Q, Monmouth Junction, NJ 08852, USA