



SZABO SCANDIC

Part of Europa Biosite

Produktinformation



Forschungsprodukte & Biochemikalien



Zellkultur & Verbrauchsmaterial



Diagnostik & molekulare Diagnostik



Laborgeräte & Service

Weitere Information auf den folgenden Seiten!
See the following pages for more information!



Lieferung & Zahlungsart

siehe unsere [Liefer- und Versandbedingungen](#)

Zuschläge

- Mindermengenzuschlag
- Trockeneiszuschlag
- Gefahrgutzuschlag
- Expressversand

SZABO-SCANDIC HandelsgmbH

Quellenstraße 110, A-1100 Wien

T. +43(0)1 489 3961-0

F. +43(0)1 489 3961-7

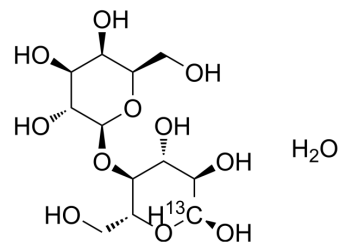
mail@szabo-scandic.com

www.szabo-scandic.com

[linkedin.com/company/szaboscandic](https://www.linkedin.com/company/szaboscandic) 

[1-¹³C]Lactose monohydrate

Cat. No.:	HY-W779009
CAS No.:	287100-62-3
Molecular Formula:	C ₁₁ ¹³ CH ₂₄ O ₁₂
Molecular Weight:	361.3
Target:	Bacterial
Pathway:	Anti-infection
Storage:	Please store the product under the recommended conditions in the Certificate of Analysis.



BIOLOGICAL ACTIVITY

Description

[1-¹³C]Lactose monohydrate is an isotopic labeling drug^[1].

REFERENCES

[1]. B Bose-Basu, et al. Deuterium nuclear spin-lattice relaxation times and quadrupolar coupling constants in isotopically labeled saccharides. J Magn Reson. 2000 Jun;144(2):207-16.

Caution: Product has not been fully validated for medical applications. For research use only.

Tel: 609-228-6898

Fax: 609-228-5909

E-mail: tech@MedChemExpress.com

Address: 1 Deer Park Dr, Suite Q, Monmouth Junction, NJ 08852, USA