



# SZABO SCANDIC

Part of Europa Biosite

## Produktinformation



Forschungsprodukte & Biochemikalien



Zellkultur & Verbrauchsmaterial



Diagnostik & molekulare Diagnostik



Laborgeräte & Service

Weitere Information auf den folgenden Seiten!  
See the following pages for more information!



### Lieferung & Zahlungsart

siehe unsere [Liefer- und Versandbedingungen](#)

### Zuschläge

- Mindermengenzuschlag
- Trockeneiszuschlag
- Gefahrgutzuschlag
- Expressversand

### SZABO-SCANDIC HandelsgmbH

Quellenstraße 110, A-1100 Wien

T. +43(0)1 489 3961-0

F. +43(0)1 489 3961-7

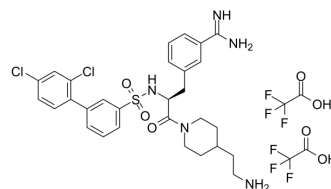
[mail@szabo-scandic.com](mailto:mail@szabo-scandic.com)

[www.szabo-scandic.com](http://www.szabo-scandic.com)

[linkedin.com/company/szaboscandic](https://www.linkedin.com/company/szaboscandic) 

## Matriptase-IN-2

<b>Cat. No.:</b>	HY-W783268A
<b>CAS No.:</b>	1268874-09-4
<b>Molecular Formula:</b>	C <sub>33</sub> H <sub>35</sub> Cl <sub>2</sub> F <sub>6</sub> N <sub>5</sub> O <sub>7</sub> S
<b>Molecular Weight:</b>	830.62
<b>Target:</b>	Others
<b>Pathway:</b>	Others
<b>Storage:</b>	-20°C, sealed storage, away from moisture * In solvent : -80°C, 6 months; -20°C, 1 month (sealed storage, away from moisture)



### SOLVENT & SOLUBILITY

#### In Vitro

DMSO : 83 mg/mL (99.93 mM; Need ultrasonic and warming)

Solvent	Mass	Concentration		
		1 mg	5 mg	10 mg
Preparing Stock Solutions	1 mM	1.2039 mL	6.0196 mL	12.0392 mL
	5 mM	0.2408 mL	1.2039 mL	2.4078 mL
	10 mM	0.1204 mL	0.6020 mL	1.2039 mL

Please refer to the solubility information to select the appropriate solvent.

### BIOLOGICAL ACTIVITY

#### Description

Matriptase-IN-2 (compound 432) is a potent Matriptase inhibitor<sup>[1]</sup>.

### REFERENCES

[1]. Klas Telborn. Apparatus and method for regenerating a particulate filter in a motor vehicle. Patent, WO2011002395A1.

**Caution: Product has not been fully validated for medical applications. For research use only.**

Tel: 609-228-6898

Fax: 609-228-5909

E-mail: tech@MedChemExpress.com

Address: 1 Deer Park Dr, Suite Q, Monmouth Junction, NJ 08852, USA