



# SZABO SCANDIC

Part of Europa Biosite

## Produktinformation



Forschungsprodukte & Biochemikalien



Zellkultur & Verbrauchsmaterial



Diagnostik & molekulare Diagnostik



Laborgeräte & Service

Weitere Information auf den folgenden Seiten!  
See the following pages for more information!



### Lieferung & Zahlungsart

siehe unsere [Liefer- und Versandbedingungen](#)

### Zuschläge

- Mindermengenzuschlag
- Trockeneiszuschlag
- Gefahrgutzuschlag
- Expressversand

### SZABO-SCANDIC HandelsgmbH

Quellenstraße 110, A-1100 Wien

T. +43(0)1 489 3961-0

F. +43(0)1 489 3961-7

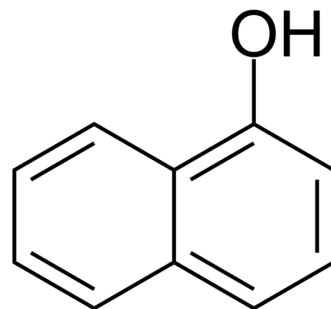
[mail@szabo-scandic.com](mailto:mail@szabo-scandic.com)

[www.szabo-scandic.com](http://www.szabo-scandic.com)

[linkedin.com/company/szaboscandic](https://www.linkedin.com/company/szaboscandic) 

## 1-Naphthol

Cat. No.:	HY-Y1309		
CAS No.:	90-15-3		
Molecular Formula:	C <sub>10</sub> H <sub>8</sub> O		
Molecular Weight:	144.17		
Target:	Endogenous Metabolite		
Pathway:	Metabolic Enzyme/Protease		
Storage:	Powder	-20°C	3 years
		4°C	2 years
	In solvent	-80°C	2 years
		-20°C	1 year



### SOLVENT & SOLUBILITY

#### In Vitro

Ethanol : 100 mg/mL (693.63 mM; Need ultrasonic)  
 H<sub>2</sub>O : 1 mg/mL (6.94 mM; Need ultrasonic)

Concentration	Solvent	Mass		
		1 mg	5 mg	10 mg
Preparing Stock Solutions	1 mM	6.9363 mL	34.6813 mL	69.3626 mL
	5 mM	1.3873 mL	6.9363 mL	13.8725 mL
	10 mM	0.6936 mL	3.4681 mL	6.9363 mL

Please refer to the solubility information to select the appropriate solvent.

### BIOLOGICAL ACTIVITY

#### Description

1-naphthol is an excited state proton transfer (ESPT) fluorescent molecular probe.

#### IC<sub>50</sub> & Target

Human Endogenous Metabolite

### REFERENCES

[1]. Swain J, et al. 1-Naphthol as an ESPT fluorescent molecular probe for sensing thermotropic microenvironmental changes of pluronic F127 in aqueous media. Phys Chem Chem Phys. 2015 Jul 14;17(26):16752-9.

---

**Caution: Product has not been fully validated for medical applications. For research use only.**

Tel: 609-228-6898

Fax: 609-228-5909

E-mail: [tech@MedChemExpress.com](mailto:tech@MedChemExpress.com)

Address: 1 Deer Park Dr, Suite Q, Monmouth Junction, NJ 08852, USA