



SZABO SCANDIC

Part of Europa Biosite

Produktinformation



Forschungsprodukte & Biochemikalien



Zellkultur & Verbrauchsmaterial



Diagnostik & molekulare Diagnostik



Laborgeräte & Service

Weitere Information auf den folgenden Seiten!
See the following pages for more information!



Lieferung & Zahlungsart

siehe unsere [Liefer- und Versandbedingungen](#)

Zuschläge

- Mindermengenzuschlag
- Trockeneiszuschlag
- Gefahrgutzuschlag
- Expressversand

SZABO-SCANDIC HandelsgmbH

Quellenstraße 110, A-1100 Wien

T. +43(0)1 489 3961-0

F. +43(0)1 489 3961-7

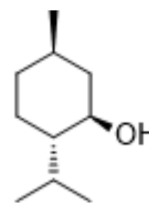
mail@szabo-scandic.com

www.szabo-scandic.com

[linkedin.com/company/szaboscandic](https://www.linkedin.com/company/szaboscandic) 

DL-Menthol

Cat. No.:	HY-Y1683		
CAS No.:	89-78-1		
Molecular Formula:	C ₁₀ H ₂₀ O		
Molecular Weight:	156.27		
Storage:	Powder	-20°C	3 years
		4°C	2 years
	In solvent	-80°C	2 years
		-20°C	1 year



Relative stereochemistry

SOLVENT & SOLUBILITY

In Vitro

DMSO : 100 mg/mL (639.92 mM; Need ultrasonic)
 H₂O : 1 mg/mL (6.40 mM; Need ultrasonic)

Preparing Stock Solutions	Solvent Concentration	Mass	1 mg	5 mg	10 mg
	1 mM		6.3992 mL	31.9959 mL	63.9918 mL
	5 mM		1.2798 mL	6.3992 mL	12.7984 mL
	10 mM		0.6399 mL	3.1996 mL	6.3992 mL

Please refer to the solubility information to select the appropriate solvent.

In Vivo

- Add each solvent one by one: 10% DMSO >> 90% (20% SBE-β-CD in saline)
 Solubility: ≥ 2.5 mg/mL (16.00 mM); Clear solution
- Add each solvent one by one: 10% DMSO >> 90% corn oil
 Solubility: ≥ 2.5 mg/mL (16.00 mM); Clear solution

BIOLOGICAL ACTIVITY

Description

DL-Menthol is a relative configuration of (-)-Menthol. DL-Menthol relates to the activation of GABAA receptor^[1].

Caution: Product has not been fully validated for medical applications. For research use only.

Tel: 609-228-6898

Fax: 609-228-5909

E-mail: tech@MedChemExpress.com

Address: 1 Deer Park Dr, Suite Q, Monmouth Junction, NJ 08852, USA