



SZABO SCANDIC

Part of Europa Biosite

Produktinformation



Forschungsprodukte & Biochemikalien



Zellkultur & Verbrauchsmaterial



Diagnostik & molekulare Diagnostik



Laborgeräte & Service

Weitere Information auf den folgenden Seiten!
See the following pages for more information!



Lieferung & Zahlungsart

siehe unsere [Liefer- und Versandbedingungen](#)

Zuschläge

- Mindermengenzuschlag
- Trockeneiszuschlag
- Gefahrgutzuschlag
- Expressversand

SZABO-SCANDIC HandelsgmbH

Quellenstraße 110, A-1100 Wien

T. +43(0)1 489 3961-0

F. +43(0)1 489 3961-7

mail@szabo-scandic.com

www.szabo-scandic.com

[linkedin.com/company/szaboscandic](https://www.linkedin.com/company/szaboscandic) 



Mouse anti K-Cadherin/Cadherin-6

Catalogue number: **MUB0305P**

Clone	2B6
Isotype	IgG1
Product Type	Primary Antibodies
Units	0.1 mg
Host	Mouse
Species reactivity	Human Rat
Application	Immunoblotting Immunocytochemistry Immunohistochemistry (frozen) Immunohistochemistry (paraffin)

Distributors

For Purchasing Information, please contact your local distributor

[Find Distributor](#)

Background

Cadherins constitute a family of transmembrane glycoproteins involved in Ca²⁺-dependent cell-cell interactions. The members of this family are differentially expressed in various tissues. They function in the maintenance of tissue integrity and morphogenesis. The cadherins generally contain five extracellular repeats, a transmembrane domain and a cytoplasmic tail that binds to the Catenin family of cytoskeletal anchoring proteins which also function as signal transducers. The extracellular domains are responsible for the specificity of homophilic interactions between cells expressing the same cadherin. Cadherins are divided into type I and type II subgroups. Type I cadherins include epithelial cadherin (E-cadherin, cadherin-1 or uvomorulin), neural cadherin (N-cadherin or cadherin-2), placental cadherin (P-cadherin or cadherin-3) and retinal cadherin (R-cadherin or cadherin-4). Kidney cadherin (K-cadherin or cadherin-6) and osteoblast cadherin (OB-cadherin or cadherin-11) are type II cadherins. Cadherin-6 is expressed in the proximal tubule epithelium of the kidney from which most renal cell carcinomas are derived.

Figure 1
Immunohistochemistry on frozen section of human kidney positive reactivity in renal tubules (epithelium)

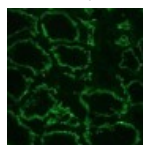
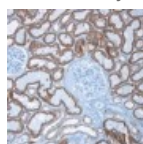


Figure 2
Immunohistochemistry on paraffin section of human kidney



Source

2B6 is a Mouse monoclonal IgG1 antibody obtained by fusion of SP2/0 Mouse myeloma cells with spleen cells from a BALB/c Mouse immunized with affinity purified extracellular domain of Human cadherin-6-GST fusion protein.

Product

Each vial contains 100 ul 1 mg/ml purified monoclonal antibody in PBS containing 0.09% sodium azide.

Applications

2B6 is suitable for immunoblotting, immunocytochemistry and immunohistochemistry on frozen and paraffin sections when using a PBS buffer containing 0.1 mM CaCl₂ and 0.1 mM MgCl₂. Optimal antibody dilution should be determined by titration; recommended range is 1:25 – 1:50 for immunohistochemistry with avidin-biotinylated Horseradish peroxidase complex (ABC) as detection reagent, and 1:25 – 1:250 for immunoblotting applications.

Specificity

2B6 recognizes the extracellular domain of cadherin-6.

Storage

Store at 4°C, or in small aliquots at -20°C.

References

1. Shimazui, T., Oosterwijk, E., Akaza, H., Bringuier, P., Ruijter, E., van Berkel, H., Wakka, J. O., van Bokhoven, A., Debruyne, F. M., and Schalken, J. A. (1998). Expression of cadherin-6 as a novel diagnostic tool to predict prognosis of patients with E-cadherin-absent renal cell carcinoma, *Clin Cancer Res* 4, 2419-24.
2. Shimazui, T., Oosterwijk-Wakka, J., Akaza, H., Bringuier, P. P., Ruijter, E., Debruyne, F. M., Schalken, J. A., and Oosterwijk, E. (2000). Alterations in expression of cadherin-6 and E-cadherin during kidney development and in renal cell carcinoma, *Eur Urol* 38, 331-8.

Caution

This product is intended FOR RESEARCH USE ONLY, and FOR TESTS IN VITRO, not for use in diagnostic or therapeutic procedures involving humans or animals. This product contains sodium azide. To prevent formation of toxic vapors, do not mix with strong acidic solutions. To prevent formation of potentially explosive metallic azides in metal plumbing, always wash into drain with copious quantities

of water. This datasheet is as accurate as reasonably achievable, but Nordic-MUbio accepts no liability for any inaccuracies or omissions in this information.

[Home](#) | [Company Profile](#) | [Catalogue](#) | [Distributors](#) | [Contact](#) |

Content: Nordic-MUbio BV - Copyright © 2015