



# SZABO SCANDIC

Part of Europa Biosite

## Produktinformation



Forschungsprodukte & Biochemikalien



Zellkultur & Verbrauchsmaterial



Diagnostik & molekulare Diagnostik



Laborgeräte & Service

Weitere Information auf den folgenden Seiten!  
See the following pages for more information!



### Lieferung & Zahlungsart

siehe unsere [Liefer- und Versandbedingungen](#)

### Zuschläge

- Mindermengenzuschlag
- Trockeneiszuschlag
- Gefahrgutzuschlag
- Expressversand

### SZABO-SCANDIC HandelsgmbH

Quellenstraße 110, A-1100 Wien

T. +43(0)1 489 3961-0

F. +43(0)1 489 3961-7

[mail@szabo-scandic.com](mailto:mail@szabo-scandic.com)

[www.szabo-scandic.com](http://www.szabo-scandic.com)

[linkedin.com/company/szaboscandic](https://www.linkedin.com/company/szaboscandic) 



## Rat anti E-selectin

Catalogue number: **MUB0506P**

Clone	UZ6
Isotype	IgG2b
Product Type	Primary Antibodies
Units	0.1 mg
Host	Rat
Species reactivity	Mouse
Application	ELISA Flow cytometry Immunoblotting Immunocytochemistry Immunofluorescence Immunohistochemistry (frozen) Immunoprecipitation

## Distributors

For Purchasing Information,  
please contact your local  
distributor

[Find Distributor](#)

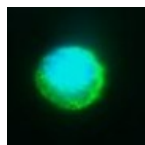
### Background

Leukocytes adhere to the blood vessel endothelium during extravasation in postcapillary venules of lymph nodes. In addition, leukocyte adhesion occurs in the capillaries and small venules at any site in the body after onset of inflammation. This response is immediate and involves a cascade of adhesion receptors. At the endothelial surface members of the selectin and immunoglobulin superfamilies participate in this cascade. Selectins are C-type cell surface lectins that play a role in leukocyte adhesion to the blood vessel wall endothelium. E-selectin (CD62E) is an endothelial cell specific selectin that is expressed only after activation with proinflammatory cytokines. In vitro experiments have shown that IL-1, TNF $\alpha$  and bacterial wall components like lipopolysaccharides induce the transcription of E-selectin in a NF $\kappa$ B dependent signalling cascade. E-selectin has been associated with blood vessel endothelium in diverse inflammatory situations.

### Source

UZ6 is a Rat monoclonal IgG2b antibody derived by fusion of SP2/0 Mouse myeloma cells with spleen cells from a Lewis Rat immunized with LPS-activated mIEND1 cells expressing E-selectin at their

1\_MUB0506  
Figure 1  
Immunostaining  
of E-Selectin  
transfected  
Chinese Hamster  
Ovary (CHO) cell



cell surface.

#### **Product**

Each vial contains 100 µl 1 mg/ml purified monoclonal antibody in PBS containing 0.09% sodium azide.

#### **Applications**

UZ6 is suitable for immunoblotting, ELISA, immunoprecipitation, immunohistochemistry on frozen sections and flow cytometry (dilution 1:500).

#### **Specificity**

UZ6 recognizes a conformational epitope in the CR2 region in murine E-selectin. UZ6 partially inhibits leukocyte adhesion to murine activated endothelial cells.

#### **Storage**

Store at 4°C, or in small aliquots at -20°C.

#### **References**

1. Hallmann, R., Zimmermann, U., Sorokin, L. M., Needham, L., and Von der Mark, K. (1995). Adhesion of leukocytes to the inflamed endothelium, *Scand J Rheumatol Suppl* 101, 107-9.
2. Hammel, M., Weitz-Schmidt, G., Krause, A., Moll, T., Vestweber, D., Zerwes, H. G., and Hallmann, R. (2001). Species-specific and conserved epitopes on Mouse and Human E-selectin important for leukocyte adhesion, *Exp Cell Res* 269, 266-74.

#### **Caution**

This product is intended FOR RESEARCH USE ONLY, and FOR TESTS IN VITRO, not for use in diagnostic or therapeutic procedures involving humans or animals. This product contains sodium azide. To prevent formation of toxic vapors, do not mix with strong acidic solutions. To prevent formation of potentially explosive metallic azides in metal plumbing, always wash into drain with copious quantities of water. This datasheet is as accurate as reasonably achievable, but Nordic-MUbio accepts no liability for any inaccuracies or omissions in this information.