



# SZABO SCANDIC

Part of Europa Biosite

## Produktinformation



Forschungsprodukte & Biochemikalien



Zellkultur & Verbrauchsmaterial



Diagnostik & molekulare Diagnostik



Laborgeräte & Service

Weitere Information auf den folgenden Seiten!  
See the following pages for more information!



### Lieferung & Zahlungsart

siehe unsere [Liefer- und Versandbedingungen](#)

### Zuschläge

- Mindermengenzuschlag
- Trockeneiszuschlag
- Gefahrgutzuschlag
- Expressversand

### SZABO-SCANDIC HandelsgmbH

Quellenstraße 110, A-1100 Wien

T. +43(0)1 489 3961-0

F. +43(0)1 489 3961-7

[mail@szabo-scandic.com](mailto:mail@szabo-scandic.com)

[www.szabo-scandic.com](http://www.szabo-scandic.com)

[linkedin.com/company/szaboscandic](https://www.linkedin.com/company/szaboscandic) 



## Mouse anti Integrin alpha 3A

Catalogue number: **MUB0900P**

Clone	29A3
Isotype	IgG1
Product Type	Primary Antibodies
Units	0.1 mg
Host	Mouse
Species reactivity	Human
Application	Immunoblotting Immunocytochemistry Immunohistochemistry (frozen)

## Distributors

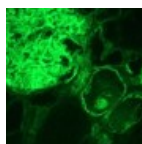
For Purchasing Information, please contact your local distributor

[Find Distributor](#)

### Background

Integrins are a family of heterodimeric membrane glycoproteins consisting of non-covalently associated  $\alpha$  and  $\beta$  subunits. More than 18  $\alpha$  and 8  $\beta$  subunits with numerous splice variant isoforms have been identified in mammals. In general, integrins function as receptors for extracellular matrix proteins. Certain integrins can also bind to soluble ligands or to counter-receptors on adjacent cells, such as the intracellular adhesion molecules (ICAMs), resulting in aggregation of cells. Signals transduced by integrins play a role in many biological processes, including cell growth, differentiation, migration and apoptosis. For integrin subunits  $\alpha3$  and  $\alpha6$ , two cytoplasmic variants, A and B, have been identified.

1\_MUB0900 Figure 1  
Immunohistochemistry  
on frozen section of  
human kidney



### Source

29A3 is a Mouse monoclonal IgG1,  $\kappa$  antibody derived by fusion of SP2/0 Mouse myeloma cells with spleen cells from a BALB/c Mouse immunized with a synthetic peptide corresponding to the cytoplasmic domain of the integrin subunit  $\alpha3A$  including an additional N-terminal cysteine (CRTRALYEAQRQKAEMKSPSETERLTDDY) coupled to keyhole limpet hemocyanin.

### Product

Each vial contains 100 ul 1 mg/ml purified monoclonal antibody in PBS containing 0.09% sodium azide.

### **Applications**

29A3 is suitable for immunoblotting, immunocytochemistry and immunohistochemistry on frozen tissues. Optimal antibody dilution should be determined by titration; recommended range is 1:100 – 1:200 for immunohistochemistry with avidin-biotinylated Horseradish peroxidase complex (ABC) as detection reagent, and 1:100 – 1:1000 for immunoblotting applications.

### **Cross Reactivity**

A broad species reactivity is expected because of the conserved nature of the epitope.

### **Specificity**

29A3 recognizes specifically the cytoplasmic domain of integrin subunit  $\alpha 3A$  which is present in the basal cell layer in skin, glomeruli, Bowman's capsules and distal tubuli in kidney, all vascular and capillary endothelia in brain, heart and skin, and vascular smooth muscle cells in heart.

### **Storage**

Store at 4°C, or in small aliquots at -20°C.

### **References**

1. Delwel, G. O., de Melker, A. A., Hogervorst, F., Jaspars, L. H., Fles, D. L., Kuikman, I., Lindblom, A., Paulsson, M., Timpl, R., and Sonnenberg, A. (1994). Distinct and overlapping ligand specificities of the alpha 3A beta 1 and alpha 6A beta 1 integrins: recognition of laminin isoforms, *Mol Biol Cell* 5, 203-15.
2. de Melker, A. A., Sterk, L. M., Delwel, G. O., Fles, D. L., Daams, H., Weening, J. J., and Sonnenberg, A. (1997). The A and B variants of the alpha 3 integrin subunit: tissue distribution and functional characterization, *Lab Invest* 76, 547-63.

### **Caution**

This product is intended FOR RESEARCH USE ONLY, and FOR TESTS IN VITRO, not for use in diagnostic or therapeutic procedures involving humans or animals. This product contains sodium azide. To prevent formation of toxic vapors, do not mix with strong acidic solutions. To prevent formation of potentially explosive metallic azides in metal plumbing, always wash into drain with copious quantities of water. This datasheet is as accurate as reasonably achievable, but Nordic-MUBio

accepts no liability for any inaccuracies or omissions in this information.

[Home](#) | [Company Profile](#) | [Catalogue](#) | [Distributors](#) | [Contact](#) |

Content: Nordic-MUbio BV - Copyright © 2015