



SZABO SCANDIC

Part of Europa Biosite

Produktinformation



Forschungsprodukte & Biochemikalien



Zellkultur & Verbrauchsmaterial



Diagnostik & molekulare Diagnostik



Laborgeräte & Service

Weitere Information auf den folgenden Seiten!
See the following pages for more information!



Lieferung & Zahlungsart

siehe unsere [Liefer- und Versandbedingungen](#)

Zuschläge

- Mindermengenzuschlag
- Trockeneiszuschlag
- Gefahrgutzuschlag
- Expressversand

SZABO-SCANDIC HandelsgmbH

Quellenstraße 110, A-1100 Wien

T. +43(0)1 489 3961-0

F. +43(0)1 489 3961-7

mail@szabo-scandic.com

www.szabo-scandic.com

[linkedin.com/company/szaboscandic](https://www.linkedin.com/company/szaboscandic) 



Mouse anti Integrin alpha 3A

Catalogue number: **MUB0901P**

Clone	158A3
Isotype	IgG2a
Product Type	Primary Antibodies
Units	0.1 mg
Host	Mouse
Species reactivity	Dog Human
Application	Immunoblotting Immunocytochemistry Immunohistochemistry (frozen)

Distributors

For Purchasing Information, please contact your local distributor

[Find Distributor](#)

Background

Integrins are a family of heterodimeric membrane glycoproteins consisting of non-covalently associated α and β subunits. More than 18 α and 8 β subunits with numerous splice variant isoforms have been identified in mammals. In general, integrins function as receptors for extracellular matrix proteins. Certain integrins can also bind to soluble ligands or to counter-receptors on adjacent cells, such as the intracellular adhesion molecules (ICAMs), resulting in aggregation of cells. Signals transduced by integrins play a role in many biological processes, including cell growth, differentiation, migration and apoptosis. For integrin subunits $\alpha 3$ and $\alpha 6$, two cytoplasmic variants, A and B, have been identified.

Source

158A3 is a Mouse monoclonal IgG2a antibody derived by fusion of SP2/0 Mouse myeloma cells with spleen cells from a BALB/c Mouse immunized with a synthetic peptide corresponding to the cytoplasmic domain of the integrin subunit $\alpha 3A$ including an additional N-terminal cysteine (CRTRALYEAQRQKAEMKSPSETERLTDDY) coupled to keyhole limpet hemocyanin.

Figure 1
Immunohistochemistry on frozen section of human skin

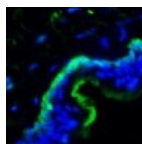
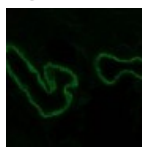


Figure 2
Immunohistochemistry on frozen sections of dog skin.



Product

Each vial contains 100 µl 1 mg/ml purified monoclonal antibody in PBS containing 0.09% sodium azide.

Applications

158A3 is suitable for immunoblotting, immunocytochemistry and immunohistochemistry on frozen tissues. Optimal antibody dilution should be determined by titration.

Specificity

158A3 reacts exclusively with the cytoplasmic domain of non-phosphorylated integrin subunit α3A.

Storage

Store at 4°C, or in small aliquots at -20°C.

References

1. Delwel, G. O., de Melker, A. A., Hogervorst, F., Jaspars, L. H., Fles, D. L., Kuikman, I., Lindblom, A., Paulsson, M., Timpl, R., and Sonnenberg, A. (1994). Distinct and overlapping ligand specificities of the alpha 3A beta 1 and alpha 6A beta 1 integrins: recognition of laminin isoforms, *Mol Biol Cell* 5, 203-15.
2. de Melker, A. A., Sterk, L. M., Delwel, G. O., Fles, D. L., Daams, H., Weening, J. J., and Sonnenberg, A. (1997). The A and B variants of the alpha 3 integrin subunit: tissue distribution and functional characterization, *Lab Invest* 76, 547-63.

Caution

This product is intended FOR RESEARCH USE ONLY, and FOR TESTS IN VITRO, not for use in diagnostic or therapeutic procedures involving humans or animals. This product contains sodium azide. To prevent formation of toxic vapors, do not mix with strong acidic solutions. To prevent formation of potentially explosive metallic azides in metal plumbing, always wash into drain with copious quantities of water. This datasheet is as accurate as reasonably achievable, but Nordic-MUbio accepts no liability for any inaccuracies or omissions in this information.