



SZABO SCANDIC

Part of Europa Biosite

Produktinformation



Forschungsprodukte & Biochemikalien



Zellkultur & Verbrauchsmaterial



Diagnostik & molekulare Diagnostik



Laborgeräte & Service

Weitere Information auf den folgenden Seiten!
See the following pages for more information!



Lieferung & Zahlungsart

siehe unsere [Liefer- und Versandbedingungen](#)

Zuschläge

- Mindermengenzuschlag
- Trockeneiszuschlag
- Gefahrgutzuschlag
- Expressversand

SZABO-SCANDIC HandelsgmbH

Quellenstraße 110, A-1100 Wien

T. +43(0)1 489 3961-0

F. +43(0)1 489 3961-7

mail@szabo-scandic.com

www.szabo-scandic.com

[linkedin.com/company/szaboscandic](https://www.linkedin.com/company/szaboscandic) 



Mouse anti Integrin alpha 6B

Catalogue number: **MUB0905P**

Clone	6B4
Isotype	IgG1
Product Type	Primary Antibodies
Units	0.1 mg
Host	Mouse
Species reactivity	Human
Application	Immunoblotting Immunocytochemistry Immunohistochemistry (frozen)

Distributors

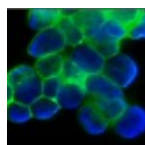
For Purchasing Information, please contact your local distributor

[Find Distributor](#)

Background

Integrins are a family of heterodimeric membrane glycoproteins consisting of non-covalently associated α and β subunits. More than 18 α and 8 β subunits with numerous splice variant isoforms have been identified in mammals. In general, integrins function as receptors for extracellular matrix proteins. Certain integrins can also bind to soluble ligands or to counter-receptors on adjacent cells, such as the intracellular adhesion molecules (ICAMs), resulting in aggregation of cells. Signals transduced by integrins play a role in many biological processes, including cell growth, differentiation, migration and apoptosis. For integrin subunits $\alpha3$ and $\alpha6$, two cytoplasmic variants, A and B, have been identified.

Figure 1
Immunostaining of human ovarian carcinoma cells (cell line OVCAR-3)



Source

6B4 is a Mouse monoclonal IgG1, κ antibody derived by fusion of SP2/0 Mouse myeloma cells with spleen cells from a BALB/c Mouse immunized with a synthetic peptide corresponding to a 34 amino acid stretch in the cytoplasmic domain of integrin $\alpha6B$ including an appending N-terminal cysteine:

CSRYDDSVPRYHAVRIRKEEREIKDEKYIDNLEKK coupled to keyhole limpet hemocyanin.

Product

Each vial contains 100 μ l 1 mg/ml purified monoclonal antibody in PBS containing 0.09%

sodium azide.

Applications

6B4 is suitable for immunoblotting, immunocytochemistry and immunohistochemistry on frozen tissues. Optimal antibody dilution should be determined by titration; recommended range is 1:50 – 1:100 for immunohistochemistry with avidin-biotinylated Horseradish peroxidase complex (ABC) as detection reagent, and 1:100 – 1:500 for immunoblotting applications.

Cross Reactivity

A broad species reactivity is expected because of the conserved nature of the epitope.

Specificity

6B4 recognizes specifically the cytoplasmic domain of integrin subunit $\alpha 6$ B. 6B4 stains the basement membrane zone of ducts and acini of salivary gland, kidney tubules, epithelium of colonic crypts and weakly stains sweat glands and sebaceous glands.

Storage

Store at 4°C, or in small aliquots at -20°C.

References

1. Hogervorst, F., Admiraal, L. G., Niessen, C., Kuikman, I., Janssen, H., Daams, H., and Sonnenberg, A. (1993). Biochemical characterization and tissue distribution of the A and B variants of the integrin alpha 6 subunit, *J Cell Biol* 121, 179-91.

Caution

This product is intended FOR RESEARCH USE ONLY, and FOR TESTS IN VITRO, not for use in diagnostic or therapeutic procedures involving humans or animals. This product contains sodium azide. To prevent formation of toxic vapors, do not mix with strong acidic solutions. To prevent formation of potentially explosive metallic azides in metal plumbing, always wash into drain with copious quantities of water. This datasheet is as accurate as reasonably achievable, but Nordic-MUbio accepts no liability for any inaccuracies or omissions in this information.