



SZABO SCANDIC

Part of Europa Biosite

Produktinformation



Forschungsprodukte & Biochemikalien



Zellkultur & Verbrauchsmaterial



Diagnostik & molekulare Diagnostik



Laborgeräte & Service

Weitere Information auf den folgenden Seiten!
See the following pages for more information!



Lieferung & Zahlungsart

siehe unsere [Liefer- und Versandbedingungen](#)

Zuschläge

- Mindermengenzuschlag
- Trockeneiszuschlag
- Gefahrgutzuschlag
- Expressversand

SZABO-SCANDIC HandelsgmbH

Quellenstraße 110, A-1100 Wien

T. +43(0)1 489 3961-0

F. +43(0)1 489 3961-7

mail@szabo-scandic.com

www.szabo-scandic.com

[linkedin.com/company/szaboscandic](https://www.linkedin.com/company/szaboscandic) 



Rat anti Laminin

Catalogue number: **MUB1100P**

Clone	A5
Isotype	IgG2a
Product Type	Primary Antibodies
Units	0.1 mg
Host	Rat
Species reactivity	Human Mouse Swine
Application	Immunocytochemistry Immunofluorescence Immunohistochemistry (frozen)

Distributors

For Purchasing Information, please contact your local distributor

[Find Distributor](#)

Background

Basement membrane components play an important role in cell adhesion, locomotion, differentiation and embryonic compartmentalization. Laminin anchors cells to the basement membrane through interactions with integrins at the cell surface and collagens in the basement membrane.

Source

A5 is a Rat monoclonal IgG2a antibody derived by fusion of Mouse myeloma cells with spleen cells from a Fisher Rat immunized with a laminin preparation from the EHS Mouse tumor.

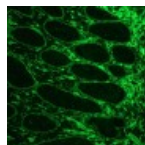
Product

Each vial contains 100 ul 1 mg/ml purified monoclonal antibody in PBS containing 0.09% sodium azide.

Applications

A5 is suitable for immunocytochemistry, immunofluorescence and immunohistochemistry on frozen tissues. Optimal antibody dilution should be determined by titration; recommended range is 1:25 - 1:200 for immunohistochemistry with avidin-biotinylated Horseradish peroxidase

MUB1100P_1
Immunofluorescence staining of frozen sections from human colon (methanol fixed) using MUB1100P, showing the localization of laminin in the connective tissue and in basement membranes surrounding the epithelial crypts and villi.



MUB1100P_2
Immunofluorescence staining of frozen sections from pig striated skeletal muscle (methanol fixed) using MUB1100P, showing the localization of

complex (ABC) as detection reagent.

Specificity

A5 reacts with laminin.

Storage

Store at 4°C, or in small aliquots at -20°C.

References

1. Ljubimov, A. V., Bartek, J., Couchman, J. R., Kapuller, L. L., Veselov, V. V., Kovarik, J., Perevoshchikov, A. G., and Krutovskikh, V. A. (1992). Distribution of individual components of basement membrane in Human colon polyps and adenocarcinomas as revealed by monoclonal antibodies. *Int J Cancer* 50, 562-66.
2. Ljubimova, J.Y., Lakhter, A.J., Loksh, A., Yong, W.H., Riedinger, M.S., Miner, J.H., Sorokin, L.M., Ljubimov, A.V., Black, K.L. (2001). Overexpression of alpha4, chain-containing laminins in Human glial tumors identified by gene microarray analysis. *Cancer Research* 61, 5601-10.

Caution

This product is intended FOR RESEARCH USE ONLY, and FOR TESTS IN VITRO, not for use in diagnostic or therapeutic procedures involving humans or animals. This product contains sodium azide. To prevent formation of toxic vapors, do not mix with strong acidic solutions. To prevent formation of potentially explosive metallic azides in metal plumbing, always wash into drain with copious quantities of water. This datasheet is as accurate as reasonably achievable, but Nordic-MUbio accepts no liability for any inaccuracies or omissions in this information.

laminin in the connective tissue and in basement membranes surrounding the myofibrils.

