



SZABO SCANDIC

Part of Europa Biosite

Produktinformation



Forschungsprodukte & Biochemikalien



Zellkultur & Verbrauchsmaterial



Diagnostik & molekulare Diagnostik



Laborgeräte & Service

Weitere Information auf den folgenden Seiten!
See the following pages for more information!



Lieferung & Zahlungsart

siehe unsere [Liefer- und Versandbedingungen](#)

Zuschläge

- Mindermengenzuschlag
- Trockeneiszuschlag
- Gefahrgutzuschlag
- Expressversand

SZABO-SCANDIC HandelsgmbH

Quellenstraße 110, A-1100 Wien

T. +43(0)1 489 3961-0

F. +43(0)1 489 3961-7

mail@szabo-scandic.com

www.szabo-scandic.com

[linkedin.com/company/szaboscandic](https://www.linkedin.com/company/szaboscandic) 



Mouse anti Nestin

Catalogue number: **MUB1302P**

Clone	10C2
Isotype	IgG1
Product Type	Primary Antibodies
Units	0.1 mg
Host	Mouse
Species reactivity	Human
Application	Immunoblotting Immunocytochemistry Immunohistochemistry (frozen) Immunohistochemistry (paraffin)

Distributors

For Purchasing Information, please contact your local distributor

[Find Distributor](#)

Background

Nestin is a class IV intermediate filament protein abundantly produced in the developing central nervous system (CNS) and in early embryonic neuroepithelial stem cells. This cytoskeletal protein has been widely used as a predominant marker for stem/progenitor cells, glioma cells, and tumor endothelial cells. Also, it is a superior angiogenic marker to evaluate neovascularity of endothelial cells in tumors. This highly specific antibody to human nestin can aid in characterizing progenitor cells differentiating into distinct lineages, in enhancing the therapeutic potential of human neural stem/progenitor cells in the treatment of CNS diseases or injury, and in identifying neuroepithelial tumor cells.

Source

Monoclonal antibody 10C2 was derived by fusion of P3x63Ag8.653 myeloma cells with spleen cells from a BALB/c mouse immunized with a 150-amino-acid fragment from the cloned human nestin, conjugated to glutathione S-transferase.

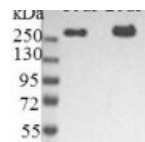
Product

Each vial contains 100 ul 1 mg/ml purified monoclonal antibody in PBS containing 0.09% sodium azide.

Applications

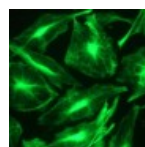
1_MUB1302

Figure 1
Immunoblotting of U251-cell lysate showing reactivity with nestin



2_MUB1302

Figure 2
Immunostaining of intracellular nestin filaments in U251 cells



The 10C2 nestin antibody is useful for immunocytochemistry on fixed cells, immunohistochemistry on frozen and paraffin-embedded tissues, and Western blotting. Optimal antibody dilution should be determined by titration; recommended range is 1:100 to 1:200 for immunocytochemistry and immunohistochemistry with a fluorescein or rhodamine conjugated anti-mouse secondary antibody, and 1:1000 to 1:5000 for Western blot applications using chemoluminescent detection.

Specificity

RNF406 is suitable for immunoblotting and immunohistochemistry on frozen and paraffin-embedded tissues.

Storage

Can be stored at -20o C to -70o C for long term storage. Once thawed, store at 4oC, do not refreeze.

References

1. Messam, C., Hou, J., Major, E.O. (2000). Co-expression of nestin in neural and glial cells in the developing human CNS defined by a human specific anti-nestin antibody. *Exp Neurol* 161, 585-96. 2.
2. Messam, C., Hou, J., Berman, J.W., Major, E.O. (2002) Analysis of the temporal expression of nestin in human fetal brain derived neuronal and glial progenitor cells. *Brain Res Dev Brain Res* 134, 87-92. 3.
3. Hou, Y.Y., et al. (2006). Schwannoma of the gastrointestinal tract: a clinicopathological, immunohistochemical and ultrastructural study of 33 cases. *Histopathology* 48, 536-45. 4.
4. Mokry, J., Pudil, R., Ehrmann, J., Cizkova, D., Osterreicher, J., Filip, S., Kolar, Z. (2008). Re-expression of nestin in the myocardium of postinfarcted patients. *Virchows Arch* 453, 33-41. 5.
5. Corsino, P.E., et al. (2008). Mammary tumors initiated by constitutive Cdk2 activation contain an invasive basal-like component. *Neoplasia* 10, 1240-52. 6.
6. Murphy, A.J., Viero, S., Ho, M., Thorner, P.S. (2009). Diagnostic utility of nestin expression in pediatric tumors in the region of the kidney. *Appl Immunohistochem Mol Morphol* 17, 517-23. 7.
7. Sellheyer, K., Krahl, D. (2010). Spatiotemporal expression pattern of neuroepithelial stem cell marker nestin suggests a role in dermal homeostasis, neovasculogenesis, and tumor stroma development: a study on embryonic and adult human skin. *J Am Acad Dermatol* 63, 93-113. 8.
8. Elamin, M.H., et al. (2010). Curcumin inhibits the Sonic Hedgehog signaling pathway and triggers apoptosis in medulloblastoma cells. *Mol. Carcinog.* 49, 302-14. 9.
9. Popescu, L.M., et al. (2010). Telocytes in human epicardium. *J Cell Mol Med* 14, 2085-93. 10.

10. Sellheyer, K., Krahl, D. (2011). Does the peritumoral stroma of basal cell carcinoma recapitulate the follicular connective tissue sheath? J Cutan Pathol 38, 551-9.

Caution

This product is intended FOR RESEARCH USE ONLY, and FOR TESTS IN VITRO, not for use in diagnostic or therapeutic procedures involving humans or animals. This product contains sodium azide. To prevent formation of toxic vapors, do not mix with strong acidic solutions. To prevent formation of potentially explosive metallic azides in metal plumbing, always wash into drain with copious quantities of water. This datasheet is as accurate as reasonably achievable, but Nordic-MUbio accepts no liability for any inaccuracies or omissions in this information.