



# SZABO SCANDIC

Part of Europa Biosite

## Produktinformation



Forschungsprodukte & Biochemikalien



Zellkultur & Verbrauchsmaterial



Diagnostik & molekulare Diagnostik



Laborgeräte & Service

Weitere Information auf den folgenden Seiten!  
See the following pages for more information!



### Lieferung & Zahlungsart

siehe unsere [Liefer- und Versandbedingungen](#)

### Zuschläge

- Mindermengenzuschlag
- Trockeneiszuschlag
- Gefahrgutzuschlag
- Expressversand

### SZABO-SCANDIC HandelsgmbH

Quellenstraße 110, A-1100 Wien

T. +43(0)1 489 3961-0

F. +43(0)1 489 3961-7

[mail@szabo-scandic.com](mailto:mail@szabo-scandic.com)

[www.szabo-scandic.com](http://www.szabo-scandic.com)

[linkedin.com/company/szaboscandic](https://www.linkedin.com/company/szaboscandic) 



## Mouse anti Plakophilin-3

Catalogue number: **MUB1503P**

Clone	23E3/4
Isotype	IgG2b
Product Type	Primary Antibodies
Units	0.1 mg
Host	Mouse
Species reactivity	Dog Human Mouse
Application	Immunoblotting Immunocytochemistry Immunohistochemistry (frozen) Immunohistochemistry (paraffin) Immunoprecipitation

## Distributors

For Purchasing Information, please contact your local distributor

[Find Distributor](#)

### Background

Plakophilin-3 is an Armadillo-like protein present in nuclei and desmosomes of epithelial cells. The expression pattern of this protein seems to be largely restricted to epithelial cell types. Plakophilin-3 can be detected along cell borders in a punctuate staining pattern typical for desmosomal proteins. In addition to the desmosomal immunolocalisation, immunostaining was observed as bright nuclear speckles. Thus, like plakophilin-1 and-2, plakophilin-3 displays a dual intracellular localisation in the desmosomal plaque and in the cell nucleus, and therefore is probably involved in signal transduction pathways between the plasma membrane and the nucleus. The Human protein has a predicted molecular mass of 87 kD.

### Source

23E3/4 is a Mouse monoclonal IgG2b antibody derived by fusion of Mouse myeloma cells with spleen cells from a Mouse immunized with a synthetic peptide corresponding to amino acid residues 570-589 of Human plakophilin-3 coupled to keyhole limpet hemocyanin via an additional cysteine residue at the N-terminus

Figure 1:  
Immunohistochemical localization of plakophilin-3 in hair root sheath of dog skin. MUB1503P diluted 250x in indirect immunofluorescence assay.

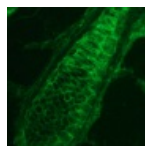
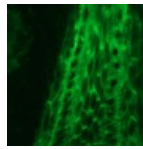


Figure 2:  
Immunohistochemical localization of plakophilin-3 in hair root sheath of dog skin. MUB1503P diluted 250x in indirect immunofluorescence assay.

(CFTPQSRRLRELPLAADALTF).



### Product

Each vial contains 100  $\mu$ l 1 mg/ml purified monoclonal antibody in PBS containing 0.09% sodium azide.

### Applications

23E3/4 is suitable for immunocytochemistry (methanol- and paraformaldehyde-fixed cells), immunohistochemistry on frozen and paraffin-embedded tissues, immunoprecipitation and Western blot detection. For optimal results, fixed cells and frozen tissues should be treated with 0.2% Triton-X 100 for, respectively, 5 min and 15 min prior to incubation with primary antibody. Optimal antibody dilution should be determined by titration; recommended range is 1:25 – 1:200 for immunohistochemistry with avidin-biotinylated Horseradish peroxidase complex (ABC) as detection reagent, and 1:100 – 1:1000 for immunoblotting applications.

### Specificity

23E3/4 reacts with an epitope located between residues 570-589 in Human plakophilin-3.

### Storage

Store at 4°C, or in small aliquots at -20°C.

### References

1. Bonne, S., van Hengel, J., Nollet, F., Kools, P., and van Roy, F. (1999). Plakophilin-3, a novel armadillo-like protein present in nuclei and desmosomes of epithelial cells. *J Cell Sci* 112, 2265-2276.

### Caution

This product is intended FOR RESEARCH USE ONLY, and FOR TESTS IN VITRO, not for use in diagnostic or therapeutic procedures involving humans or animals. This product contains sodium azide. To prevent formation of toxic vapors, do not mix with strong acidic solutions. To prevent formation of potentially explosive metallic azides in metal plumbing, always wash into drain with copious quantities of water. This datasheet is as accurate as reasonably achievable, but Nordic-MUBio accepts no liability for any inaccuracies or omissions in this information.

