



# SZABO SCANDIC

Part of Europa Biosite

## Produktinformation



Forschungsprodukte & Biochemikalien



Zellkultur & Verbrauchsmaterial



Diagnostik & molekulare Diagnostik



Laborgeräte & Service

Weitere Information auf den folgenden Seiten!  
See the following pages for more information!



### Lieferung & Zahlungsart

siehe unsere [Liefer- und Versandbedingungen](#)

### Zuschläge

- Mindermengenzuschlag
- Trockeneiszuschlag
- Gefahrgutzuschlag
- Expressversand

### SZABO-SCANDIC HandelsgmbH

Quellenstraße 110, A-1100 Wien

T. +43(0)1 489 3961-0

F. +43(0)1 489 3961-7

[mail@szabo-scandic.com](mailto:mail@szabo-scandic.com)

[www.szabo-scandic.com](http://www.szabo-scandic.com)

[linkedin.com/company/szaboscandic](https://www.linkedin.com/company/szaboscandic) 



## Mouse anti Human CD11b/C3

Catalogue number: **MUB2001P**

Clone	Bear-1
Isotype	IgG1
Product Type	Primary Antibodies
Units	0.1 mg
Host	Mouse (Balb/c)
Species reactivity	Human
Application	Flow cytometry Immunoprecipitation

## Distributors

For Purchasing Information, please contact your local distributor

[Find Distributor](#)

### Background

Integrin alpha M (ITGAM) is one protein subunit that forms the heterodimeric integrin alpha-M beta-2 ( $\alpha$ M $\beta$ 2) molecule, also known as macrophage-1 antigen (Mac-1) or complement receptor 3 (CR3). ITGAM is also known as CR3A, and cluster of differentiation molecule 11B (CD11B). The second chain of  $\alpha$ M $\beta$ 2 is the common integrin  $\beta$ 2 subunit known as CD18, and integrin  $\alpha$ M $\beta$ 2 thus belongs to the  $\beta$ 2 subfamily (or leukocyte) integrins.  $\alpha$ M $\beta$ 2 is expressed on the surface of many leukocytes involved in the innate immune system, including monocytes, granulocytes, macrophages, and natural killer cells. It mediates inflammation by regulating leukocyte adhesion and migration and has been implicated in several immune processes such as phagocytosis, cell-mediated cytotoxicity, chemotaxis and cellular activation. It is involved in the complement system due to its capacity to bind inactivated complement component 3b (iC3b).

### Source

Bear-1 is a Mouse monoclonal IgG1 antibody derived by fusion of SP2/0 Mouse myeloma cells with spleen cells from a BALB/c Mouse immunized with purified Human monocytes.

### Product

Each vial contains 100  $\mu$ l 1 mg/ml purified monoclonal antibody in PBS containing 0.09% sodium azide.

Figure 1: Flow cytometric analysis of an indirectly immunostained normal white blood cell preparation with MUB2001P (diluted 500x)

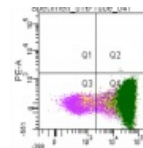
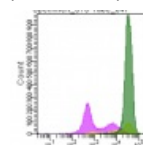


Figure2: Flow cytometric analysis of an indirectly immunostained normal white blood cell preparation with MUB2001P (diluted 500x)



**Applications**

Bear-1 is useful for immunoprecipitation and flow cytometry. Optimal antibody dilution should be determined by titration.

**Specificity**

Bear-1 reacts with the CD11b alpha chain of the CD11b/CD18. Bear-1 precipitated a 165-95-kDa complex and is found to be similar to Mo-1 (monocyte differentiation antigen).

**Storage**

Store at 4°C, or in small aliquots at -20°C.

**References**

1. G.D. Keizer, J. Borst, C.G. Figdor, H. Spits, F. Miedema, C. Terhorst and J.E. de Vries. Biochemical and functional characteristics of the Human leukocyte membrane antigen family LFA-1, Mo-1 and p150,95. Eur. J. Immunol. 15: 1142-1147, 1985.

**Caution**

This product is intended FOR RESEARCH USE ONLY, and FOR TESTS IN VITRO, not for use in diagnostic or therapeutic procedures involving humans or animals. This product contains sodium azide. To prevent formation of toxic vapors, do not mix with strong acidic solutions. To prevent formation of potentially explosive metallic azides in metal plumbing, always wash into drain with copious quantities of water. This datasheet is as accurate as reasonably achievable, but Nordic-MUbio accepts no liability for any inaccuracies or omissions in this information.