



SZABO SCANDIC

Part of Europa Biosite

Produktinformation



Forschungsprodukte & Biochemikalien



Zellkultur & Verbrauchsmaterial



Diagnostik & molekulare Diagnostik



Laborgeräte & Service

Weitere Information auf den folgenden Seiten!
See the following pages for more information!



Lieferung & Zahlungsart

siehe unsere [Liefer- und Versandbedingungen](#)

Zuschläge

- Mindermengenzuschlag
- Trockeneiszuschlag
- Gefahrgutzuschlag
- Expressversand

SZABO-SCANDIC HandelsgmbH

Quellenstraße 110, A-1100 Wien

T. +43(0)1 489 3961-0

F. +43(0)1 489 3961-7

mail@szabo-scandic.com

www.szabo-scandic.com

[linkedin.com/company/szaboscandic](https://www.linkedin.com/company/szaboscandic) 

Datasheet for 000-000-H47

Triple FLAG® Peptide**Overview**

Description:	Triple FLAG® Peptide - 000-000-H47
Item No.:	000-000-H47
Size:	1.0 mg
Applications:	SDS-PAGE

Product Details

Background:	The Triple FLAG® Peptide is a synthetic peptide of 23 amino acid residues (molecular weight of 2861.9 daltons). The Asp-Tyr-Lys-Xaa-Xaa-Asp motif is repeated three times in the peptide. Eight amino acids at the C-terminus make up the classic FLAG® sequence (Asp-Tyr-Lys-Asp-Asp-Asp-Asp-Lys or DYKDDDDK). The triple FLAG peptide is intended for immunoaffinity chromatography to allow elution under non-denaturing conditions by competitive elution with excess of free triple FLAG® Peptide.
Synonyms:	synthetic FLAG® triple peptide, Met-Asp-Tyr-Lys-Asp-His-Asp-Gly-Asp-Tyr-Lys-Asp-His-Asp-Ile-Asp-Tyr-Lys-Asp-Asp-Asp-Asp-Lys, ddddk peptide, dykdddk peptide, control peptide, blocking peptide
Type:	Peptide

Target Details

Purity/Specificity:	Greater than 90% specific peptide by HPLC and MS.
Relevant Links:	<ul style="list-style-type: none">DYKDDDDK (FLAG) IP Protocol

Application Details

Tested Applications:	SDS-PAGE
Application Note:	The Triple FLAG® Peptide has been tested by SDS-PAGE. A working concentration of 500 µg/mL for triple FLAG® peptide is typically used for competitive elution of FLAG® containing proteins from anti-DYKDDDDK affinity gels (p/n 200-350-383). For use as a control in antibody-peptide competition assays (PCA) use the peptide at 1.0 µg per 1.0 µl of antibody/antiserum in per assay. See anti-DYKDDDDK FLAG® affinity gel PROTOCOL for recommendations for use.

Assay Dilutions: All assays should be optimized by the user. Recommended dilutions (if any) may be listed below.

IP: YES - see PROTOCOL

WB: YES as blocking peptide in PCA

Formulation

Physical State: Lyophilized

Concentration: 1.0 mg/ml by dry weight

Buffer: None

Preservative: None

Stabilizer: None

Reconstitution Volume: 1.0 mL

Reconstitution Buffer: 0.05 M Tris Chloride, 0.15 M Sodium Chloride, pH 7.4

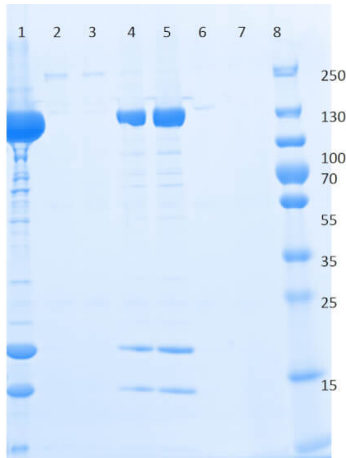
Shipping & Handling

Shipping Condition: Ambient

Storage Condition: Store vial at -20 ° C prior to opening. Aliquot contents and freeze at -20° C or below for extended storage. Avoid cycles of freezing and thawing. Centrifuge product if not completely clear after standing at room temperature. Dilute only prior to immediate use.

Expiration: Expiration date is six (6) months from date of receipt.

Images

**SDS-PAGE**

SDS-PAGE of Anti-DYKDDDDK (FLAG® tag) Affinity Gel. Lane 1: DYKDDDDK tagged recombinant protein. Lane 2: flow through. Lane 3: wash. Lane 4: eluted fraction one. Lane 5: eluted fraction two. Lane 6: eluted fraction three. Lane 7: blank. Lane 8: molecular weight markers. Load: 5 µg protein lane 1, 15µL per each other lane.

Predicted/Observed size: 135kDa for DYKDDDDK tagged recombinant protein.

Disclaimer

This product is for research use only and is not intended for therapeutic or diagnostic applications. Please contact a technical service representative for more information. All products of animal origin manufactured by Rockland Immunochemicals are derived from starting materials of North American origin. Collection was performed in United States Department of Agriculture (USDA) inspected facilities and all materials have been inspected and certified to be free of disease and suitable for exportation. All properties listed are typical characteristics and are not specifications. All suggestions and data are offered in good faith but without guarantee as conditions and methods of use of our products are beyond our control. All claims must be made within 30 days following the date of delivery. The prospective user must determine the suitability of our materials before adopting them on a commercial scale. Suggested uses of our products are not recommendations to use our products in violation of any patent or as a license under any patent of Rockland Immunochemicals, Inc. If you require a commercial license to use this material and do not have one, then return this material, unopened to: Rockland Inc., P.O. BOX 5199, Limerick, Pennsylvania, USA.