



SZABO SCANDIC

Part of Europa Biosite

Produktinformation



Forschungsprodukte & Biochemikalien



Zellkultur & Verbrauchsmaterial



Diagnostik & molekulare Diagnostik



Laborgeräte & Service

Weitere Information auf den folgenden Seiten!
See the following pages for more information!



Lieferung & Zahlungsart

siehe unsere [Liefer- und Versandbedingungen](#)

Zuschläge

- Mindermengenzuschlag
- Trockeneiszuschlag
- Gefahrgutzuschlag
- Expressversand

SZABO-SCANDIC HandelsgmbH

Quellenstraße 110, A-1100 Wien

T. +43(0)1 489 3961-0

F. +43(0)1 489 3961-7

mail@szabo-scandic.com

www.szabo-scandic.com

[linkedin.com/company/szaboscandic](https://www.linkedin.com/company/szaboscandic) 

Datasheet for 000-001-200

Glutathione-S-Transferase (GST) Control Protein

Overview

Description:	Glutathione-S-Transferase (GST) Control Protein - 000-001-200
Item No.:	000-001-200
Size:	100 µg
Applications:	SDS-PAGE, WB, Biochemical Assay
Expressed in:	E. coli

Product Details

Background:	Glutathione-S-Transferase (GST) Control Protein will bind to glutathione affinity resin and will be detected by Anti-GST antibody. Affinity tags are appended to proteins thereby allowing them to be purified from their crude biological source using an affinity technique. Common affinity tags include Glutathione-S-Transferase (GST), chitin binding protein (CBP), maltose binding protein (MBP), and the poly-Histidine or HIS-tag.
Synonyms:	control protein, GST protein, GST control, Glutathione-S-Transferase control, Glutathione-S-Transferase protein
Expressed in:	E. coli

Target Details

Purity/Specificity:	Glutathione-S-Transferase (GST) Control Protein was purified by chromatography from E. coli preparations. Assay by immunoelectrophoresis resulted in a single precipitin arc against Anti-GST antibody. Analysis by SDS-PAGE resulted in a pattern consistent with purified GST and an estimated purity greater than 90%.
----------------------------	---

Application Details

Tested Applications:	SDS-PAGE, WB
Suggested Applications:	Biochemical Assay (Based on references)

Application Note: GST Control Protein is suitable for use as a control in affinity purification and in western blot immunoassays and has been tested in SDS-PAGE and WB. Optimal concentration should be determined by the researcher. Expect a band at ~25.5 kDa.

Assay Dilutions: All assays should be optimized by the user. Recommended dilutions (if any) may be listed below.

Formulation

Physical State:	Liquid (sterile filtered)
Concentration:	1.0mg/mL by BCA assay
Buffer:	0.02 M Potassium Phosphate, 0.15 M Sodium Chloride, pH 7.2
Preservative:	0.01% (w/v) Sodium Azide
Stabilizer:	None

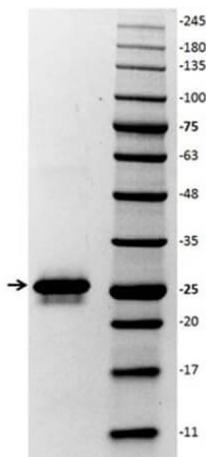
Shipping & Handling

Shipping Condition: Dry Ice

Storage Condition: Store vial at -20 °C prior to opening. Aliquot contents and freeze at -20 °C or below for extended storage. Avoid cycles of freezing and thawing. Centrifuge product if not completely clear after standing at room temperature. This product is stable for several weeks at 4 °C as an undiluted liquid. Dilute only prior to immediate use.

Expiration: Expiration date is six (6) months from date of receipt.

Images



SDS-PAGE

SDS-PAGE of Glutathione-S-Transferase (GST) Control Protein Lane 1: Glutathione-S-Transferase (p/n 000-001-200). Lane 2: Opal Prestained Protein Standard 10-245kDa (p/n MB-210-0500). Load: 1 ng per lane. Primary antibody: none. Secondary antibody: none. Predicted/Observed size: 25.5 kDa for Glutathione-S-Transferase monomers. Other band(s): none.

References

- Li YL et al. ApoC1 promotes the metastasis of clear cell renal cell carcinoma via activation of STAT3. *Oncogene*. (2020)

Disclaimer

This product is for research use only and is not intended for therapeutic or diagnostic applications. Please contact a technical service representative for more information. All products of animal origin manufactured by Rockland Immunochemicals are derived from starting materials of North American origin. Collection was performed in United States Department of Agriculture (USDA) inspected facilities and all materials have been inspected and certified to be free of disease and suitable for exportation. All properties listed are typical characteristics and are not specifications. All suggestions and data are offered in good faith but without guarantee as conditions and methods of use of our products are beyond our control. All claims must be made within 30 days following the date of delivery. The prospective user must determine the suitability of our materials before adopting them on a commercial scale. Suggested uses of our products are not recommendations to use our products in violation of any patent or as a license under any patent of Rockland Immunochemicals, Inc. If you require a commercial license to use this material and do not have one, then return this material, unopened to: Rockland Inc., P.O. BOX 5199, Limerick, Pennsylvania, USA.