



# SZABO SCANDIC

Part of Europa Biosite

## Produktinformation



Forschungsprodukte & Biochemikalien



Zellkultur & Verbrauchsmaterial



Diagnostik & molekulare Diagnostik



Laborgeräte & Service

Weitere Information auf den folgenden Seiten!  
See the following pages for more information!



### Lieferung & Zahlungsart

siehe unsere [Liefer- und Versandbedingungen](#)

### Zuschläge

- Mindermengenzuschlag
- Trockeneiszuschlag
- Gefahrgutzuschlag
- Expressversand

### SZABO-SCANDIC HandelsgmbH

Quellenstraße 110, A-1100 Wien

T. +43(0)1 489 3961-0

F. +43(0)1 489 3961-7

[mail@szabo-scandic.com](mailto:mail@szabo-scandic.com)

[www.szabo-scandic.com](http://www.szabo-scandic.com)

[linkedin.com/company/szaboscandic](https://www.linkedin.com/company/szaboscandic) 

Datasheet for 001-001-105

## Bovine Collagen Type III

### Overview

<b>Description:</b>	Bovine Collagen Type III - 001-001-105
<b>Item No.:</b>	001-001-105
<b>Size:</b>	500 µg
<b>Applications:</b>	SDS-PAGE
<b>Origin:</b>	Bovine

### Product Details

<b>Background:</b>	Bovine Collagen Type III is one of a family of proteins found particularly in the flesh and connective tissues of mammals (approximately one-third of the body's total protein). Over two dozen types of collagen have been described, though Type III is the collagen associated with granulation tissues formed during healing.
<b>Synonyms:</b>	Type III collagen, collagen 3, bovine collagen
<b>Species of Origin:</b>	Bovine
<b>Type:</b>	Native Protein

### Target Details

<b>Gene Name:</b>	COL3A
<b>Purity/Specificity:</b>	Bovine Collagen Type III has been prepared from bovine placenta and is chromatographically and immunologically pure. Bovine Collagen Type III is free from other collagens, serum proteins and non-collagen extracellular matrix proteins. Bovine Collagen Type III reacts with anti-Collagen Type III. Reaction with Rockland's anti-Collagen I, II, IV, V or VI is negligible.
<b>Relevant Links:</b>	<ul style="list-style-type: none"><li>• <a href="#">GenelD - 510833</a></li><li>• <a href="#">NCBI - AAI23470.1</a></li><li>• <a href="#">UniProtKB - P04258</a></li></ul>

### Application Details

<b>Tested Applications:</b>	SDS-PAGE
<b>Application Note:</b>	Bovine Collagen Type III is tested by SDS-Page and can be utilized as a control or standard reagent in Western Blotting and ELISA experiments.
<b>Assay Dilutions:</b>	All assays should be optimized by the user. Recommended dilutions (if any) may be listed below.
<b>ELISA:</b>	1:10,000
<b>IHC:</b>	1:100-1:500
<b>WB:</b>	1:1000

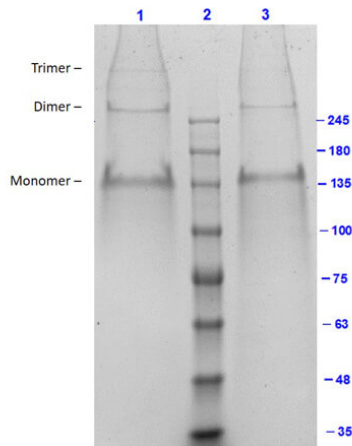
## Formulation

<b>Physical State:</b>	Liquid (sterile filtered)
<b>Concentration:</b>	1 mg/ml by nanodrop at 205 nm
<b>Buffer:</b>	0.5 M Acetic Acid
<b>Preservative:</b>	0.01% (w/v) Sodium Azide

## Shipping & Handling

<b>Shipping Condition:</b>	Wet Ice
<b>Storage Condition:</b>	Store vial at 4° C prior to opening. This product is stable at 4° C as an undiluted liquid. Dilute only prior to immediate use.
<b>Expiration:</b>	Expiration date is six (6) months from date of receipt.

## Images



#### SDS-PAGE

SDS-PAGE Results of Bovine Collagen Type III. Lane 1: Bovine Collagen Type III Reduced (7.0µg). Lane 2: Opal Prestained Molecular Weight Marker (p/n MB-210-0500). Lane 3: Bovine Collagen Type III Non-Reduced (7.0µg). 7.5% Gel, Coomassie Stained. Observed MW: Type III trimer, dimer, monomer.

## Disclaimer

This product is for research use only and is not intended for therapeutic or diagnostic applications. Please contact a technical service representative for more information. All products of animal origin manufactured by Rockland Immunochemicals are derived from starting materials of North American origin. Collection was performed in United States Department of Agriculture (USDA) inspected facilities and all materials have been inspected and certified to be free of disease and suitable for exportation. All properties listed are typical characteristics and are not specifications. All suggestions and data are offered in good faith but without guarantee as conditions and methods of use of our products are beyond our control. All claims must be made within 30 days following the date of delivery. The prospective user must determine the suitability of our materials before adopting them on a commercial scale. Suggested uses of our products are not recommendations to use our products in violation of any patent or as a license under any patent of Rockland Immunochemicals, Inc. If you require a commercial license to use this material and do not have one, then return this material, unopened to: Rockland Inc., P.O. BOX 5199, Limerick, Pennsylvania, USA.