



SZABO SCANDIC

Part of Europa Biosite

Produktinformation



Forschungsprodukte & Biochemikalien



Zellkultur & Verbrauchsmaterial



Diagnostik & molekulare Diagnostik



Laborgeräte & Service

Weitere Information auf den folgenden Seiten!
See the following pages for more information!



Lieferung & Zahlungsart

siehe unsere [Liefer- und Versandbedingungen](#)

Zuschläge

- Mindermengenzuschlag
- Trockeneiszuschlag
- Gefahrgutzuschlag
- Expressversand

SZABO-SCANDIC HandelsgmbH

Quellenstraße 110, A-1100 Wien

T. +43(0)1 489 3961-0

F. +43(0)1 489 3961-7

mail@szabo-scandic.com

www.szabo-scandic.com

[linkedin.com/company/szaboscandic](https://www.linkedin.com/company/szaboscandic) 

Datasheet for 001-001-108

Bovine Collagen Type VI

Overview

Description:	Bovine Collagen Type VI - 001-001-108
Item No.:	001-001-108
Size:	500 µg
Origin:	Bovine

Product Details

Background:	In muscle tissue, collagen serves as a major component of the endomysium. Collagen constitutes one to two percent of muscle tissue, and accounts for 6% of the weight of strong, tendinous muscles. A collagen may be defined as a protein containing sizable domain(s) of triple-helical conformation. Type IV collagen is a major macromolecular constituent of basement membranes and can be readily isolated from basement-membrane-rich tissues or highly vascularized tissues such as the placental villi. This collagen appears to be largely restricted to structures identifiable as basement membranes. In contrast, type VI collagen appears to be prevalent in several tissues even though it has been isolated largely from placental villi preparations. The extent to which type VII and VIII collagens are distributed is not known.
Synonyms:	Collagen alpha 1 (VI) chain, COL6A1, Bovine Collagen Type VI
Species of Origin:	Bovine
Type:	Native Protein

Target Details

Gene Name:	COL6A1
Purity/Specificity:	This product has been prepared from Bovine Placenta and is chromatographically and immunologically pure. This product reacts with anti-Collagen Type VI. Reaction with Rockland's anti-Collagen I, II, III, IV or V is negligible.

Application Details

Application Note:	For use as a control or standard in indirect trapping ELISA for quantitation of antigen using a
--------------------------	---

standard curve, for immunoprecipitation and for other immunological assays as optimized by the user. Specific conditions should be optimized by user.

Assay Dilutions:	All assays should be optimized by the user. Recommended dilutions (if any) may be listed below.
ELISA:	1:10,000
IHC:	1:100-1:500
WB:	1:1000

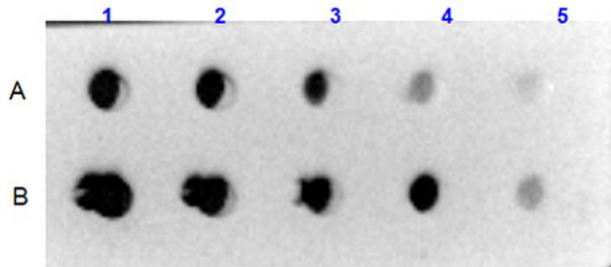
Formulation

Physical State:	Liquid (sterile filtered)
Concentration:	1.0 mg/ml by modified Lowry assay
Buffer:	0.5 M Acetic Acid
Preservative:	0.01% (w/v) Sodium Azide
Stabilizer:	None

Shipping & Handling

Shipping Condition:	Wet Ice
Storage Condition:	Store vial at 4° C prior to opening. This product is stable at 4° C as an undiluted liquid. Dilute only prior to immediate use.
Expiration:	Expiration date is six (6) months from date of receipt.

Images

**Dot Blot**

Dot Blot results using Rabbit Anti-Collagen VI Antibody.

Sample: A) Human Collagen VI (p/n 009-001-108), B)

Bovine/Human Collagen VI (p/n 001-001-108).

Load: 1) 1000ng, 2) 333.33ng, 3) 111.11ng, 4) 37.03ng, 5) 12.35ng.

Primary Antibody: Rabbit Anti-Collagen VI antibody (p/n 600-401-108) at 5 μ g/mL at RT for 1hr.

Secondary Antibody: Goat Anti-Rabbit IgG HRP Conjugated (p/n 611-1302) 1:40,000 at RT for 30mins.

Blocking: BlockOut[®] Universal Blocking Buffer (p/n MB-073) at RT for 30mins.

Disclaimer

This product is for research use only and is not intended for therapeutic or diagnostic applications. Please contact a technical service representative for more information. All products of animal origin manufactured by Rockland Immunochemicals are derived from starting materials of North American origin. Collection was performed in United States Department of Agriculture (USDA) inspected facilities and all materials have been inspected and certified to be free of disease and suitable for exportation. All properties listed are typical characteristics and are not specifications. All suggestions and data are offered in good faith but without guarantee as conditions and methods of use of our products are beyond our control. All claims must be made within 30 days following the date of delivery. The prospective user must determine the suitability of our materials before adopting them on a commercial scale. Suggested uses of our products are not recommendations to use our products in violation of any patent or as a license under any patent of Rockland Immunochemicals, Inc. If you require a commercial license to use this material and do not have one, then return this material, unopened to: Rockland Inc., P.O. BOX 5199, Limerick, Pennsylvania, USA.