



SZABO SCANDIC

Part of Europa Biosite

Produktinformation



Forschungsprodukte & Biochemikalien



Zellkultur & Verbrauchsmaterial



Diagnostik & molekulare Diagnostik



Laborgeräte & Service

Weitere Information auf den folgenden Seiten!
See the following pages for more information!



Lieferung & Zahlungsart

siehe unsere [Liefer- und Versandbedingungen](#)

Zuschläge

- Mindermengenzuschlag
- Trockeneiszuschlag
- Gefahrgutzuschlag
- Expressversand

SZABO-SCANDIC HandelsgmbH

Quellenstraße 110, A-1100 Wien

T. +43(0)1 489 3961-0

F. +43(0)1 489 3961-7

mail@szabo-scandic.com

www.szabo-scandic.com

[linkedin.com/company/szaboscandic](https://www.linkedin.com/company/szaboscandic) 

Datasheet for 001-0933

Bovine Albumin Texas Red™**Overview**

Description:	Bovine Albumin Texas Red™ Conjugated (BSA) - 001-0933
Item No.:	001-0933
Size:	1 mg
Applications:	Dot Blot
Origin:	Bovine

Product Details

Background:	Bovine Serum Albumin (BSA) is used for various biochemical applications including ELISA (Enzyme-Linked Immunosorbent Assay), high content screening assays, western blotting, FACS Buffer and immunohistochemistry. BSA as a blocking reagent is particularly useful with casein-sensitive antibodies, such as phospho-specific antibodies. Also used as a nutrient in cell and microbial culture. In restriction digests, BSA is used to stabilize some enzymes during digestion of DNA and to prevent adhesion of the enzyme to reaction tubes and other vessels. Bovine Serum Albumin can also be used to determine the quantity of other proteins, by comparing an unknown quantity of protein to known amounts of BSA.
Synonyms:	Bovine Albumin Texas Red™ conjugation, BSA Texas Red™ conjugation, Texas Red™ conjugated BSA , Texas Red™ conjugated Bovine Albumin
Species of Origin:	Bovine
Conjugate:	Texas Red®
Format:	Albumin
Type:	Native Protein
F/P Ratio:	7.19

Target Details

Purity/Specificity:	This product was prepared from normal serum by a multi-step process which includes delipidation, salt fractionation and selective precipitation followed by extensive dialysis against the buffer stated above. Assay by immunoelectrophoresis resulted in a single precipitin arc against anti-Bovine Serum.
----------------------------	---

Application Details

Tested Applications:	Dot Blot
Application Note:	BOVINE ALBUMIN Texas Red™ conjugated (BSA) has been tested in dot blot and is designed for immunofluorescence microscopy, fluorescence based plate assays (FLISA), fluorescent western blotting, multiplex analysis, including multicolor imaging, and utilizing various commercial platforms.
Assay Dilutions:	All assays should be optimized by the user. Recommended dilutions (if any) may be listed below.

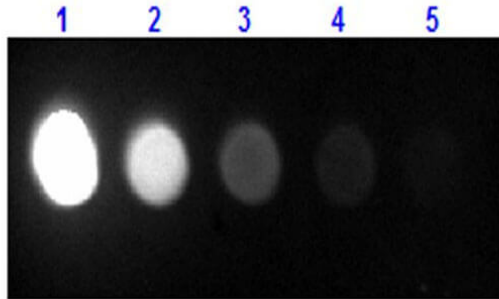
Formulation

Physical State:	Lyophilized
Concentration:	1.0 mg/mL by UV absorbance at 280 nm
Buffer:	0.02 M Potassium Phosphate, 0.15 M Sodium Chloride, pH 7.2
Preservative:	0.01% (w/v) Sodium Azide
Stabilizer:	10 mg/ml Polyethylene Glycol (PEG-8000)
Reconstitution Volume:	1.0 mL
Reconstitution Buffer:	Restore with deionized water (or equivalent)

Shipping & Handling

Shipping Condition:	Ambient
Storage Condition:	Store vial at 4° C prior to restoration. For extended storage aliquot contents and freeze at -20° C or below. Avoid cycles of freezing and thawing. Centrifuge product if not completely clear after standing at room temperature. This product is stable for several weeks at 4° C as an undiluted liquid. Dilute only prior to immediate use.
Expiration:	Expiration date is one (1) year from date of receipt.

Images

**Dot Blot**

Dot Blot results of Bovine Albumin Texas Red™ Conjugate. Bovine Albumin Texas Red™ (1) 100ng, (2) 33.3ng, (3) 11.1ng, (4) 3.70ng, (5) 1.23ng. Blocking: MB-070 for 60 min at RT. Primary Antibody: none. Secondary Antibody: none. Imaged with BioRad ChemiDoc, Fluorescein filter.

Disclaimer

This product is for research use only and is not intended for therapeutic or diagnostic applications. Please contact a technical service representative for more information. All products of animal origin manufactured by Rockland Immunochemicals are derived from starting materials of North American origin. Collection was performed in United States Department of Agriculture (USDA) inspected facilities and all materials have been inspected and certified to be free of disease and suitable for exportation. All properties listed are typical characteristics and are not specifications. All suggestions and data are offered in good faith but without guarantee as conditions and methods of use of our products are beyond our control. All claims must be made within 30 days following the date of delivery. The prospective user must determine the suitability of our materials before adopting them on a commercial scale. Suggested uses of our products are not recommendations to use our products in violation of any patent or as a license under any patent of Rockland Immunochemicals, Inc. If you require a commercial license to use this material and do not have one, then return this material, unopened to: Rockland Inc., P.O. BOX 5199, Limerick, Pennsylvania, USA.