



# SZABO SCANDIC

Part of Europa Biosite

## Produktinformation



Forschungsprodukte & Biochemikalien



Zellkultur & Verbrauchsmaterial



Diagnostik & molekulare Diagnostik



Laborgeräte & Service

Weitere Information auf den folgenden Seiten!  
See the following pages for more information!



### Lieferung & Zahlungsart

siehe unsere [Liefer- und Versandbedingungen](#)

### Zuschläge

- Mindermengenzuschlag
- Trockeneiszuschlag
- Gefahrgutzuschlag
- Expressversand

### SZABO-SCANDIC HandelsgmbH

Quellenstraße 110, A-1100 Wien

T. +43(0)1 489 3961-0

F. +43(0)1 489 3961-7

[mail@szabo-scandic.com](mailto:mail@szabo-scandic.com)

[www.szabo-scandic.com](http://www.szabo-scandic.com)

[linkedin.com/company/szaboscandic](https://www.linkedin.com/company/szaboscandic) 

**Datasheet for 001-G70-MF7****Collagen I for tissue engineering - Bovine Skin****Overview**

<b>Description:</b>	Collagen I for tissue engineering - Bovine Skin - 001-G70-MF7
<b>Item No.:</b>	001-G70-MF7
<b>Size:</b>	10 mL
<b>Applications:</b>	SDS-PAGE
<b>Origin:</b>	Bovine

**Product Details**

<b>Background:</b>	Bovine Collagen Type I is one of a family of proteins found particularly in the flesh and connective tissues of mammals (approximately one-third of the body's total protein). Over two dozen types of collagen have been described; Type I is the most abundant form in the body. Collagen Type I is found in scar tissue, tendons, the skin, arterial walls, the corneas, muscles, cartilage, and in the organic parts of bones and teeth. Bovine Collagen Type I is ideal for investigators involved in extracellular matrix proteins and osteoporosis.
<b>Synonyms:</b>	Type I collagen, collagen 1, bovine collagen, Alpha 1 type I collagen, Alpha 2 type I collagen, COL1A1, COL1A2, Collagen alpha-1(I) chain, Collagen alpha-2 (I) chain, 2D cell culture, 3D cell culture
<b>Species of Origin:</b>	Bovine

**Target Details**

<b>Gene Name:</b>	COL1A1
<b>Purity/Specificity:</b>	Bovine Collagen Type I Solution is purified from bovine skin and shown to be 95% pure.
<b>Relevant Links:</b>	<ul style="list-style-type: none"><li><a href="#">Collagen_Top_Culture-Protocol</a></li></ul>

**Application Details**

<b>Tested Applications:</b>	SDS-PAGE
<b>Application Note:</b>	Bovine Collagen Type I solution has been tested in SDS-Page and can be utilized to mimic in vivo environment for 2D and 3D cell culture, tissue engineering research, and biochemistry.

**Assay Dilutions:** All assays should be optimized by the user. Recommended dilutions (if any) may be listed below.

---

## Formulation

<b>Physical State:</b>	Liquid (sterile filtered)
<b>Concentration:</b>	2.0 mg/mL by dry weight
<b>Buffer:</b>	0.013M HCl
<b>Preservative:</b>	None
<b>Stabilizer:</b>	None

---

## Shipping & Handling

**Shipping Condition:** Wet Ice

---

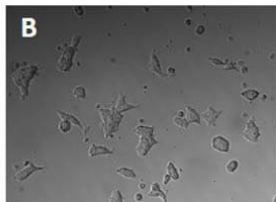
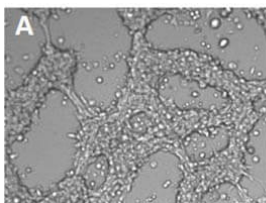
**Storage Condition:** Store vial at 4° C prior to opening. This product is stable at 4° C as an undiluted liquid. Dilute only prior to immediate use. Keep under sterile conditions.

---

**Expiration:** Expiration date is six (6) months from date of receipt.

---

## Images



### Viable cell growth

Collagen Type I from Bovine Skin for tissue engineering. NCCIT cells grown under cell specific optimal conditions for 48hs using 001-G70-MF7 as top culture media (A) or no addition of collagen (B).

## Disclaimer

This product is for research use only and is not intended for therapeutic or diagnostic applications. Please contact a technical service representative for more information. All products of animal origin manufactured by Rockland Immunochemicals are derived from starting materials of North American origin. Collection was performed in United States Department of Agriculture (USDA) inspected facilities and all materials have been inspected and certified to be free of disease and suitable for exportation. All properties listed are typical characteristics and are not specifications. All suggestions and data are offered in good faith but without guarantee as conditions and methods of use of our products are beyond our control. All claims must be made within 30 days following the date of delivery. The prospective user must determine the suitability of our materials before adopting them on a commercial scale. Suggested uses of our products are not recommendations to use our products in violation of any patent or as a license under any patent of Rockland Immunochemicals, Inc. If you require a commercial license to use this material and do not have one, then return this material, unopened to: Rockland Inc., P.O. BOX 5199, Limerick, Pennsylvania, USA.